

Datasheet for ABIN6741830
anti-DHRS9 antibody (AA 215-264)[Go to Product page](#)

1 Image

Overview

Quantity:	100 µL
Target:	DHRS9
Binding Specificity:	AA 215-264
Reactivity:	Human, Mouse, Rat, Horse, Hamster
Host:	Rabbit
Clonality:	Polyclonal
Conjugate:	This DHRS9 antibody is un-conjugated
Application:	Western Blotting (WB)

Product Details

Immunogen:	Synthetic peptide located between aa215-264 of human DHRS9 (Q9BPW9, NP_954674). Percent identity by BLAST analysis: Human, Chimpanzee, Gorilla, Gibbon, Monkey, Mouse, Rat, Hamster, Elephant, Panda, Horse, Platypus (100%), Galago, Marmoset, Dog, Bovine, Bat, Rabbit, Pig, Opossum, Guinea pig (92%). Type of Immunogen: Synthetic peptide
Isotype:	IgG
Specificity:	Human DHRS9
Predicted Reactivity:	Percent identity by BLAST analysis: Human, Mouse, Rat (100%) Dog, Bovine, Pig (92%).
Purification:	Immunoaffinity purified

Target Details

Target:	DHRS9
Alternative Name:	DHRS9 (DHRS9 Products)
Background:	Name/Gene ID: DHRS9 Synonyms: DHRS9, 3-alpha-HSD, 3ALPHA-HSD, RDH-E2, RDHL, RDH15, Retinol dehydrogenase homolog, RDH-TBE, RETSDR8, SDR9C4
Gene ID:	10170
NCBI Accession:	NP_954674
UniProt:	Q9BPW9
Pathways:	C21-Steroid Hormone Metabolic Process

Application Details

Application Notes:	Approved: WB (0.2 - 1 µg/mL) Usage: Western Blot: Suggested dilution at 1 µg/mL in 5 % skim milk / PBS buffer, and HRP conjugated anti-Rabbit IgG should be diluted in 1: 50,000 - 100,000 as second antibody. ELISA titer in peptide based assay: 1:312500.
Comment:	Target Species of Antibody: Human
Restrictions:	For Research Use only

Handling

Format:	Lyophilized
Reconstitution:	Distilled water
Concentration:	Lot specific
Buffer:	Lyophilized from PBS with 2 % sucrose
Handling Advice:	Avoid repeat freeze-thaw cycles.
Storage:	4 °C, -20 °C
Storage Comment:	Long term: -20°C, the use of 50% glycerol is recommended if storing aliquots in -20°C for long term use (up to 1 year) Short term (less than 1 week): 4°C. Avoid freeze-thaw cycles.

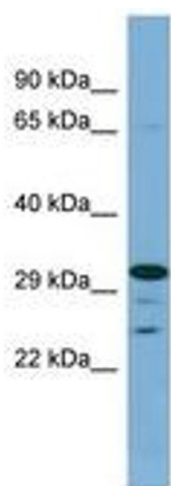


Image 1.