



[Go to Product page](#)

Datasheet for ABIN6741834
anti-EPS8 antibody (AA 647-696)

1 Image

Overview

Quantity:	100 µL
Target:	EPS8
Binding Specificity:	AA 647-696
Reactivity:	Human, Rat, Mouse, Pig, Cow, Monkey, Hamster
Host:	Rabbit
Clonality:	Polyclonal
Conjugate:	This EPS8 antibody is un-conjugated
Application:	Western Blotting (WB)

Product Details

Immunogen:	Synthetic peptide located between aa647-696 of human EPS8 (Q12929, NP_004438). Percent identity by BLAST analysis: Human, Chimpanzee, Gorilla, Orangutan, Gibbon, Galago, Marmoset, Mouse, Hamster, Bovine, Pig (100%), Dog, Rabbit, Horse, Opossum (92%), Rat, Bat (85%), Turkey, Chicken (84%). Type of Immunogen: Synthetic peptide
Isotype:	IgG
Specificity:	Human EPS8
Predicted Reactivity:	Percent identity by BLAST analysis: Human, Mouse, Bovine, Pig (100%) Dog, Rabbit, Horse (92%) Rat (85%) Chicken (84%).
Purification:	Immunoaffinity purified

Target Details

Target:	EPS8
Alternative Name:	EPS8 (EPS8 Products)
Background:	Name/Gene ID: EPS8 Synonyms: EPS8
Gene ID:	2059
NCBI Accession:	NP_004438
UniProt:	Q12929
Pathways:	EGFR Signaling Pathway, Regulation of Actin Filament Polymerization

Application Details

Application Notes:	Approved: WB (0.2 - 1 µg/mL) Usage: Western Blot: Suggested dilution at 1 µg/mL in 5 % skim milk / PBS buffer, and HRP conjugated anti-Rabbit IgG should be diluted in 1: 50,000 - 100,000 as second antibody. ELISA titer in peptide based assay: 1:62500.
Comment:	Target Species of Antibody: Human
Restrictions:	For Research Use only

Handling

Format:	Lyophilized
Reconstitution:	Distilled water
Concentration:	Lot specific
Buffer:	Lyophilized from PBS with 2 % sucrose
Handling Advice:	Avoid repeat freeze-thaw cycles.
Storage:	4 °C,-20 °C
Storage Comment:	Long term: -20°C, the use of 50% glycerol is recommended if storing aliquots in -20°C for long term use (up to 1 year) Short term (less than 1 week): 4°C. Avoid freeze-thaw cycles.

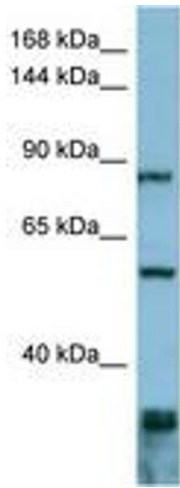


Image 1.