



[Go to Product page](#)

Datasheet for ABIN6741835
anti-GLO1 antibody (AA 35-84)

1 Image

Overview

Quantity:	100 µL
Target:	GLO1
Binding Specificity:	AA 35-84
Reactivity:	Human, Mouse, Rat, Saccharomyces cerevisiae, Zebrafish (Danio rerio), Guinea Pig, Chicken, Monkey
Host:	Rabbit
Clonality:	Polyclonal
Conjugate:	This GLO1 antibody is un-conjugated
Application:	Western Blotting (WB)

Product Details

Immunogen:	Synthetic peptide located between aa35-84 of human GLO1 (Q04760, NP_006699). Percent identity by BLAST analysis: Human, Gorilla, Gibbon, Monkey, Marmoset, Mouse, Rat, Opossum, Guinea pig, Turkey, Zebra finch, Chicken, Platypus, Lizard (100%), Elephant, Dog, Bovine, Rabbit, Horse, Pig (92%), Xenopus, Smelt, Sablefish, Zebrafish, Grape, Arabidopsis (85%). Type of Immunogen: Synthetic peptide
Isotype:	IgG
Specificity:	Human GLO1
Predicted Reactivity:	Percent identity by BLAST analysis: Mouse, Guinea pig, Chicken (100%) Dog, Bovine, Rabbit, Horse, Pig (92%) Xenopus, Zebrafish (85%).

Product Details

Purification: Immunoaffinity purified

Target Details

Target: GLO1

Alternative Name: GLO1 / Glyoxalase I ([GLO1 Products](#))

Background: Name/Gene ID: GLO1

Synonyms: GLO1, Aldoketomutase, Glx I, Glyoxalase domain containing 1, Glyoxalase I, Lactoyl glutathione lyase, Lactoylglutathione lyase, GLOD1, Methylglyoxalase, Ketone-aldehyde mutase, GLYI

Gene ID: 2739

NCBI Accession: [NP_006699](#)

UniProt: [Q04760](#)

Application Details

Application Notes: Approved: WB (0.2 - 1 µg/mL)

Usage: Western Blot: Suggested dilution at 1 µg/mL in 5 % skim milk / PBS buffer, and HRP conjugated anti-Rabbit IgG should be diluted in 1: 50,000 - 100,000 as second antibody. ELISA titer in peptide based assay: 1:62500.

Comment: Target Species of Antibody: Human

Restrictions: For Research Use only

Handling

Format: Lyophilized

Reconstitution: Distilled water

Concentration: Lot specific

Buffer: Lyophilized from PBS with 2 % sucrose

Handling Advice: Avoid repeat freeze-thaw cycles.

Storage: 4 °C, -20 °C

Handling

Storage Comment: Long term: -20°C, the use of 50% glycerol is recommended if storing aliquots in -20°C for long term use (up to 1 year)
Short term (less than 1 week): 4°C. Avoid freeze-thaw cycles.

Images

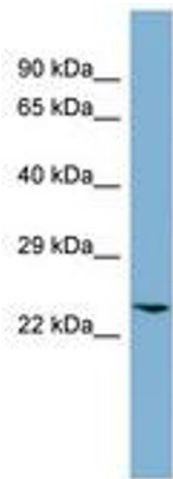


Image 1.