



Datasheet for ABIN6741836
anti-COPG2 antibody (N-Term)



[Go to Product page](#)

1 Image

Overview

Quantity:	100 µL
Target:	COPG2
Binding Specificity:	N-Term
Reactivity:	Human, Mouse, Rat, Zebrafish (Danio rerio), Guinea Pig, Monkey
Host:	Rabbit
Clonality:	Polyclonal
Conjugate:	This COPG2 antibody is un-conjugated
Application:	Western Blotting (WB)

Product Details

Immunogen:	Synthetic peptide from N-Terminus of human COPG2 (Q9UBF2, NP_036265). Percent identity by BLAST analysis: Human, Chimpanzee, Gorilla, Monkey, Marmoset, Mouse, Rat, Elephant, Opossum, Guinea pig, Zebra finch, Platypus, Salmon, Stickleback, Zebrafish (100%), Orangutan, Gibbon, Galago, Dog, Bovine, Bat, Rabbit, Horse, Pig, Turkey, Chicken, Lizard, Xenopus, Pufferfish (92%), Hamster (85%). Type of Immunogen: Synthetic peptide
Isotype:	IgG
Specificity:	Human COPG2
Predicted Reactivity:	Percent identity by BLAST analysis: Human, Mouse, Zebrafish (100%) Bovine, Pig, Chicken, Xenopus (92%) Rabbit (83%).

Product Details

Purification: Immunoaffinity purified

Target Details

Target: COPG2

Alternative Name: COPG2 ([COPG2 Products](#))

Background: Name/Gene ID: COPG2

Synonyms: COPG2, 2-COP, Coatomer subunit gamma-2, Gamma-2-coat protein, Gamma-2-COP

Gene ID: 26958

NCBI Accession: [NP_036265](#)

UniProt: [Q9UBF2](#)

Application Details

Application Notes: Approved: WB (0.2 - 1 µg/mL)

Usage: Western Blot: Suggested dilution at 1 µg/mL in 5 % skim milk / PBS buffer, and HRP conjugated anti-Rabbit IgG should be diluted in 1: 50,000 - 100,000 as second antibody. ELISA titer in peptide based assay: 1:12500.

Comment: Target Species of Antibody: Human

Restrictions: For Research Use only

Handling

Format: Lyophilized

Reconstitution: Distilled water

Concentration: Lot specific

Buffer: Lyophilized from PBS with 2 % sucrose

Handling Advice: Avoid repeat freeze-thaw cycles.

Storage: 4 °C, -20 °C

Storage Comment: Long term: -20°C, the use of 50% glycerol is recommended if storing aliquots in -20°C for long term use (up to 1 year)

Handling

Short term (less than 1 week): 4°C. Avoid freeze-thaw cycles.

Images

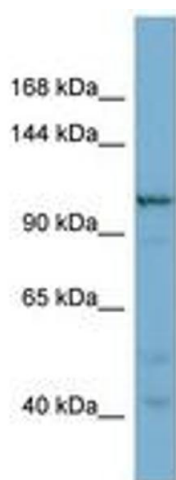


Image 1.