



[Go to Product page](#)

Datasheet for ABIN6741842

anti-LRRN4CL antibody (AA 107-156)

1 Image

Overview

Quantity:	100 µL
Target:	LRRN4CL
Binding Specificity:	AA 107-156
Reactivity:	Human, Mouse, Monkey
Host:	Rabbit
Clonality:	Polyclonal
Conjugate:	This LRRN4CL antibody is un-conjugated
Application:	Western Blotting (WB)

Product Details

Immunogen:	Synthetic peptide located between aa107-156 of human LRRN4CL (Q8ND94, NP_981967). Percent identity by BLAST analysis: Human, Gorilla, Gibbon, Monkey, Marmoset, Mouse (100%), Galago, Rat, Rabbit, Horse (92%), Bovine (91%), Panda (85%), Opossum (84%). Type of Immunogen: Synthetic peptide
Isotype:	IgG
Specificity:	Human LRRN4CL
Predicted Reactivity:	Percent identity by BLAST analysis: Rat, Horse (92%).
Purification:	Immunoaffinity purified

Target Details

Target:	LRRN4CL
Alternative Name:	LRRN4CL (LRRN4CL Products)
Background:	Name/Gene ID: LRRN4CL Synonyms: LRRN4CL, LRRN4 C-terminal-like protein, LRRN4 C-terminal like
Gene ID:	221091
NCBI Accession:	NP_981967
UniProt:	Q8ND94

Application Details

Application Notes:	Approved: WB (0.2 - 1 µg/mL) Usage: Western Blot: Suggested dilution at 1 µg/mL in 5 % skim milk / PBS buffer, and HRP conjugated anti-Rabbit IgG should be diluted in 1: 50,000 - 100,000 as second antibody. ELISA titer in peptide based assay: 1:312500.
Comment:	Target Species of Antibody: Human
Restrictions:	For Research Use only

Handling

Format:	Lyophilized
Reconstitution:	Distilled water
Concentration:	Lot specific
Buffer:	Lyophilized from PBS with 2 % sucrose
Handling Advice:	Avoid repeat freeze-thaw cycles.
Storage:	4 °C, -20 °C
Storage Comment:	Long term: -20°C, the use of 50% glycerol is recommended if storing aliquots in -20°C for long term use (up to 1 year) Short term (less than 1 week): 4°C. Avoid freeze-thaw cycles.

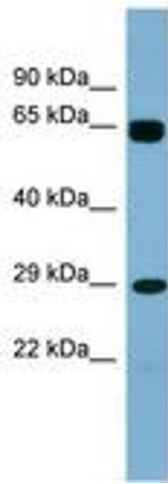


Image 1.