

Datasheet for ABIN6741851
anti-PRKAB2 antibody (AA 179-228)



[Go to Product page](#)

1 Image

Overview

Quantity:	100 µL
Target:	PRKAB2
Binding Specificity:	AA 179-228
Reactivity:	Human, Mouse, Rat, Guinea Pig, Horse, Rabbit, Cow, Dog, Monkey, Pig, Chicken, Xenopus laevis
Host:	Rabbit
Clonality:	Polyclonal
Conjugate:	This PRKAB2 antibody is un-conjugated
Application:	Western Blotting (WB)

Product Details

Immunogen:	Synthetic peptide located between aa179-228 of human PRKAB2 (O43741, NP_005390). Percent identity by BLAST analysis: Human, Gorilla, Orangutan, Gibbon, Monkey, Galago, Marmoset, Mouse, Rat, Elephant, Panda, Dog, Bovine, Rabbit, Horse, Pig, Opossum, Guinea pig, Turkey, Zebra finch, Chicken, Lizard, Xenopus (100%), Bat, Platypus, Zebrafish (92%), Chimpanzee, Catfish, Stickleback (84%). Type of Immunogen: Synthetic peptide
Isotype:	IgG
Specificity:	Human PRKAB2
Predicted Reactivity:	Percent identity by BLAST analysis: Human, Rat, Bovine, Horse, Pig, Chicken, Xenopus (100%).
Purification:	Immunoaffinity purified

Target Details

Target:	PRKAB2
Alternative Name:	PRKAB2 / AMPK Beta 2 (PRKAB2 Products)
Background:	Name/Gene ID: PRKAB2 Subfamily: AMPK/SNF1 Family: Protein Kinase Non Catalytic Synonyms: PRKAB2, AMPK beta-2 chain, AMPK beta 2, AMPK subunit beta-2
Gene ID:	5565
NCBI Accession:	NP_005390
UniProt:	O43741
Pathways:	AMPK Signaling , Warburg Effect

Application Details

Application Notes:	Approved: WB (0.2 - 1 µg/mL) Usage: Western Blot: Suggested dilution at 1 µg/mL in 5 % skim milk / PBS buffer, and HRP conjugated anti-Rabbit IgG should be diluted in 1: 50,000 - 100,000 as second antibody. ELISA titer in peptide based assay: 1:1562500.
Comment:	Target Species of Antibody: Human
Restrictions:	For Research Use only

Handling

Format:	Lyophilized
Reconstitution:	Distilled water
Concentration:	Lot specific
Buffer:	Lyophilized from PBS with 2 % sucrose
Handling Advice:	Avoid repeat freeze-thaw cycles.
Storage:	4 °C,-20 °C
Storage Comment:	Long term: -20°C, the use of 50% glycerol is recommended if storing aliquots in -20°C for long term use (up to 1 year)

Handling

Short term (less than 1 week): 4°C. Avoid freeze-thaw cycles.

Images

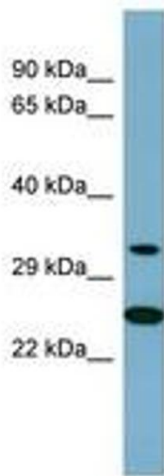


Image 1.