



Datasheet for ABIN6741858  
**anti-CXorf26 antibody (AA 71-120)**



[Go to Product page](#)

1 Image

Overview

Quantity:	100 µL
Target:	CXorf26
Binding Specificity:	AA 71-120
Reactivity:	Human, Mouse, Rat, Horse, Cow, Rabbit, Dog, Pig, Monkey, Hamster
Host:	Rabbit
Clonality:	Polyclonal
Conjugate:	This CXorf26 antibody is un-conjugated
Application:	Western Blotting (WB)

Product Details

Immunogen:	Synthetic peptide located between aa71-120 of human PBDC1 (Q9BVG4, NP_057584). Percent identity by BLAST analysis: Human, Chimpanzee, Gorilla, Gibbon, Monkey, Marmoset, Mouse, Rat, Hamster, Elephant, Panda, Dog, Bovine, Rabbit, Horse, Pig (100%), Bat, Opossum, Guinea pig, Platypus (92%), Xenopus (85%).  Type of Immunogen: Synthetic peptide
Isotype:	IgG
Specificity:	Human CXorf26
Predicted Reactivity:	Percent identity by BLAST analysis: Human, Rabbit, Horse, Pig (100%) Guinea pig (92%) Xenopus (85%).
Purification:	Immunoaffinity purified

## Target Details

---

Target:	CXorf26
Alternative Name:	CXorf26 ( <a href="#">CXorf26 Products</a> )
Background:	Name/Gene ID: PBDC1  Synonyms: PBDC1, CXorf26
Gene ID:	51260
NCBI Accession:	<a href="#">NP_057584</a>
UniProt:	<a href="#">Q9BVG4</a>

## Application Details

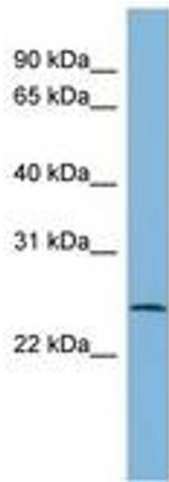
---

Application Notes:	Approved: WB (0.2 - 1 µg/mL)  Usage: Western Blot: Suggested dilution at 1 µg/mL in 5 % skim milk / PBS buffer, and HRP conjugated anti-Rabbit IgG should be diluted in 1: 50,000 - 100,000 as second antibody. ELISA titer in peptide based assay: 1:312500.
Comment:	Target Species of Antibody: Human
Restrictions:	For Research Use only

## Handling

---

Format:	Lyophilized
Reconstitution:	Distilled water
Concentration:	Lot specific
Buffer:	Lyophilized from PBS with 2 % sucrose
Handling Advice:	Avoid repeat freeze-thaw cycles.
Storage:	4 °C, -20 °C
Storage Comment:	Long term: -20°C, the use of 50% glycerol is recommended if storing aliquots in -20°C for long term use (up to 1 year)  Short term (less than 1 week): 4°C. Avoid freeze-thaw cycles.



**Image 1.**