



[Go to Product page](#)

Datasheet for ABIN6741868
anti-THG1L antibody (AA 179-228)

1 Image

Overview

Quantity:	100 µL
Target:	THG1L
Binding Specificity:	AA 179-228
Reactivity:	Human, Rabbit, Guinea Pig, Monkey, Bat
Host:	Rabbit
Clonality:	Polyclonal
Conjugate:	This THG1L antibody is un-conjugated
Application:	Western Blotting (WB)

Product Details

Immunogen:	Synthetic peptide located between aa179-228 of human THG1L (Q9NWX6, NP_060342). Percent identity by BLAST analysis: Human, Chimpanzee, Gorilla, Gibbon, Monkey, Marmoset, Bat, Rabbit (100%), Elephant, Panda, Dog, Bovine, Horse (92%), Salmon, Sablefish, Stickleback, Pike (91%), Galago, Opossum, Guinea pig, Turkey, Chicken, Platypus (85%), Drosophila (83%). Type of Immunogen: Synthetic peptide
Isotype:	IgG
Specificity:	Human THG1L
Predicted Reactivity:	Percent identity by BLAST analysis: Human (100%) Dog (92%) Guinea pig, Chicken (85%).
Purification:	Immunoaffinity purified

Target Details

Target: THG1L

Alternative Name: THG1L ([THG1L Products](#))

Background: Name/Gene ID: THG1L

Synonyms: THG1L, IHG-1, ICF45, Induced by high glucose-1

Gene ID: 54974

NCBI Accession: [NP_060342](#)

UniProt: [Q9NWX6](#)

Application Details

Application Notes: Approved: WB (0.2 - 1 µg/mL)

Usage: Western Blot: Suggested dilution at 1 µg/mL in 5 % skim milk / PBS buffer, and HRP conjugated anti-Rabbit IgG should be diluted in 1: 50,000 - 100,000 as second antibody. ELISA titer in peptide based assay: 1:312500.

Comment: Target Species of Antibody: Human

Restrictions: For Research Use only

Handling

Format: Lyophilized

Reconstitution: Distilled water

Concentration: Lot specific

Buffer: Lyophilized from PBS with 2 % sucrose

Handling Advice: Avoid repeat freeze-thaw cycles.

Storage: 4 °C, -20 °C

Storage Comment: Long term: -20°C, the use of 50% glycerol is recommended if storing aliquots in -20°C for long term use (up to 1 year)

Short term (less than 1 week): 4°C. Avoid freeze-thaw cycles.

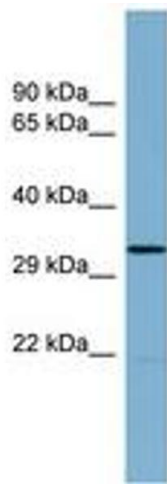


Image 1.