



[Go to Product page](#)

Datasheet for ABIN6741874
anti-FAM134A antibody (AA 143-192)

1 Image

Overview

Quantity:	100 µL
Target:	FAM134A
Binding Specificity:	AA 143-192
Reactivity:	Human, Mouse, Rat, Cow, Dog, Guinea Pig, Horse, Rabbit, Bat, Monkey, Pig
Host:	Rabbit
Clonality:	Polyclonal
Conjugate:	This FAM134A antibody is un-conjugated
Application:	Western Blotting (WB)

Product Details

Immunogen:	Synthetic peptide located between aa143-192 of human FAM134A (Q8NC44, NP_077269). Percent identity by BLAST analysis: Human, Chimpanzee, Gorilla, Gibbon, Monkey, Galago, Marmoset, Mouse, Rat, Elephant, Dog, Bovine, Bat, Rabbit, Horse, Pig, Opossum, Guinea pig (100%), Turkey, Zebra finch, Chicken, Lizard (92%), Salmon, Zebrafish (90%). Type of Immunogen: Synthetic peptide
Isotype:	IgG
Specificity:	Human FAM134A
Predicted Reactivity:	Percent identity by BLAST analysis: Rat, Dog, Bovine, Rabbit, Horse, Guinea pig (100%) Chicken (92%) Zebrafish (90%).
Purification:	Immunoaffinity purified

Target Details

Target:	FAM134A
Alternative Name:	FAM134A (FAM134A Products)
Background:	Name/Gene ID: FAM134A Synonyms: FAM134A, C2orf17, Protein FAM134A
Gene ID:	79137
NCBI Accession:	NP_077269
UniProt:	Q8NC44

Application Details

Application Notes:	Approved: WB (0.2 - 1 µg/mL) Usage: Western Blot: Suggested dilution at 1 µg/mL in 5 % skim milk / PBS buffer, and HRP conjugated anti-Rabbit IgG should be diluted in 1: 50,000 - 100,000 as second antibody. ELISA titer in peptide based assay: 1:312500.
Comment:	Target Species of Antibody: Human
Restrictions:	For Research Use only

Handling

Format:	Lyophilized
Reconstitution:	Distilled water
Concentration:	Lot specific
Buffer:	Lyophilized from PBS with 2 % sucrose
Handling Advice:	Avoid repeat freeze-thaw cycles.
Storage:	4 °C, -20 °C
Storage Comment:	Long term: -20°C, the use of 50% glycerol is recommended if storing aliquots in -20°C for long term use (up to 1 year) Short term (less than 1 week): 4°C. Avoid freeze-thaw cycles.

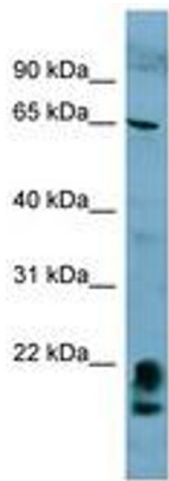


Image 1.