



[Go to Product page](#)

Datasheet for ABIN6741875
anti-DHRS11 antibody (AA 143-192)

1 Image

Overview

Quantity:	100 µL
Target:	DHRS11
Binding Specificity:	AA 143-192
Reactivity:	Human, Mouse, Rat, Monkey, Bat, Cow, Dog, Horse, Zebrafish (Danio rerio), Chicken, Pig, Rabbit, Xenopus laevis
Host:	Rabbit
Clonality:	Polyclonal
Conjugate:	This DHRS11 antibody is un-conjugated
Application:	Western Blotting (WB)

Product Details

Immunogen: Synthetic peptide located between aa143-192 of human DHRS11 (Q6UWP2, NP_077284).
Percent identity by BLAST analysis: Human, Chimpanzee, Gorilla, Gibbon, Monkey, Galago, Marmoset, Mouse, Rat, Panda, Dog, Bovine, Bat, Rabbit, Horse, Pig, Turkey, Zebra finch, Chicken, Xenopus, Salmon, Zebrafish (100%), Elephant, Guinea pig, Platypus, Stickleback, Drosophila, Beetle (92%).

Type of Immunogen: Synthetic peptide

Isotype:	IgG
Specificity:	Human DHRS11 / MGC4172
Predicted Reactivity:	Percent identity by BLAST analysis:

Product Details

Purification: Immunoaffinity purified

Target Details

Target: DHRS11

Alternative Name: DHRS11 / MGC4172 ([DHRS11 Products](#))

Background: Name/Gene ID: DHRS11

Synonyms: DHRS11, ARPG836, SDR24C1

Gene ID: 79154

NCBI Accession: [NP_077284](#)

UniProt: [Q6UWP2](#)

Application Details

Application Notes: Approved: WB (0.2 - 1 µg/mL)

Usage: Western Blot: Suggested dilution at 1 µg/mL in 5 % skim milk / PBS buffer, and HRP conjugated anti-Rabbit IgG should be diluted in 1: 50,000 - 100,000 as second antibody. ELISA titer in peptide based assay: 1:62500.

Comment: Target Species of Antibody: Human

Restrictions: For Research Use only

Handling

Format: Lyophilized

Reconstitution: Distilled water

Concentration: Lot specific

Buffer: Lyophilized from PBS with 2 % sucrose

Handling Advice: Avoid repeat freeze-thaw cycles.

Storage: 4 °C, -20 °C

Storage Comment: Long term: -20°C, the use of 50% glycerol is recommended if storing aliquots in -20°C for long term use (up to 1 year)

Handling

Short term (less than 1 week): 4°C. Avoid freeze-thaw cycles.

Images

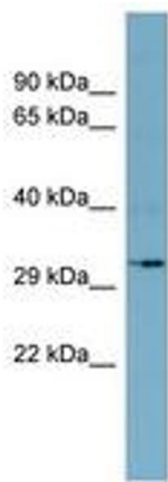


Image 1.