

Datasheet for ABIN6741879  
**anti-SMYD1 antibody (AA 107-156)**[Go to Product page](#)

## 1 Image

## Overview

Quantity:	100 µL
Target:	SMYD1
Binding Specificity:	AA 107-156
Reactivity:	Human, Mouse, Rat, Dog, Cow, Guinea Pig, Horse, Pig, Monkey
Host:	Rabbit
Clonality:	Polyclonal
Application:	Western Blotting (WB)

## Product Details

Immunogen:	Synthetic peptide located between aa107-156 of human SMYD1 (Q8NB12, NP_938015). Percent identity by BLAST analysis: Human, Chimpanzee, Gorilla, Orangutan, Gibbon, Monkey, Galago, Marmoset, Mouse, Rat, Elephant, Dog, Bovine, Horse, Pig, Guinea pig (100%), Panda, Bat, Rabbit, Lizard (92%), Opossum, Turkey, Chicken, Platypus (85%).  Type of Immunogen: Synthetic peptide
Isotype:	IgG
Specificity:	Human SMYD1
Predicted Reactivity:	Percent identity by BLAST analysis: Human, Mouse, Rat, Dog, Bovine, Horse, Pig (100%) Rabbit (92%) Chicken (85%).
Purification:	Immunoaffinity purified

## Target Details

Target:	SMYD1
Alternative Name:	SMYD1 ( <a href="#">SMYD1 Products</a> )
Background:	Name/Gene ID: SMYD1  Synonyms: SMYD1, BOP, KMT3D, ZMYND22, ZMYND18, CD8 beta opposite
Gene ID:	150572
NCBI Accession:	<a href="#">NP_938015</a>
UniProt:	<a href="#">Q8NB12</a>
Pathways:	<a href="#">Regulation of Muscle Cell Differentiation</a> , <a href="#">Skeletal Muscle Fiber Development</a>

## Application Details

Application Notes:	Approved: WB (0.2 - 1 µg/mL)  Usage: Western Blot: Suggested dilution at 1 µg/mL in 5 % skim milk / PBS buffer, and HRP conjugated anti-Rabbit IgG should be diluted in 1: 50,000 - 100,000 as second antibody. ELISA titer in peptide based assay: 1:62500.
Comment:	Target Species of Antibody: Human
Restrictions:	For Research Use only

## Handling

Format:	Lyophilized
Reconstitution:	Distilled water
Concentration:	Lot specific
Buffer:	Lyophilized from PBS with 2 % sucrose
Handling Advice:	Avoid repeat freeze-thaw cycles.
Storage:	4 °C,-20 °C
Storage Comment:	Long term: -20°C, the use of 50% glycerol is recommended if storing aliquots in -20°C for long term use (up to 1 year)  Short term (less than 1 week): 4°C. Avoid freeze-thaw cycles.

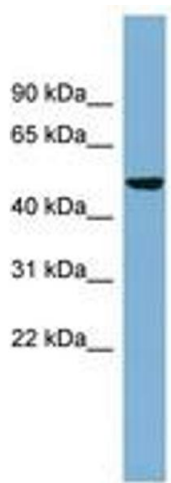


Image 1.