



[Go to Product page](#)

Datasheet for ABIN6741884
anti-FAM50B antibody (AA 35-84)

1 Image

Overview

| | |
|----------------------|---------------------------------------|
| Quantity: | 100 µL |
| Target: | FAM50B |
| Binding Specificity: | AA 35-84 |
| Reactivity: | Human, Rat, Guinea Pig, Rabbit |
| Host: | Rabbit |
| Clonality: | Polyclonal |
| Conjugate: | This FAM50B antibody is un-conjugated |
| Application: | Western Blotting (WB) |

Product Details

| | |
|-----------------------|---|
| Immunogen: | Synthetic peptide located between aa35-84 of human FAM50B (Q9Y247, NP_036267). Percent identity by BLAST analysis: Human, Chimpanzee, Gorilla, Gibbon (100%), Monkey, Marmoset, Panda (92%), Galago, Mouse, Rat, Hamster, Elephant, Guinea pig (85%). Type of Immunogen: Synthetic peptide |
| Isotype: | IgG |
| Specificity: | Human FAM50B |
| Predicted Reactivity: | Percent identity by BLAST analysis: Rat, Guinea pig (85%). |
| Purification: | Immunoaffinity purified |

Target Details

Target: FAM50B

Alternative Name: FAM50B ([FAM50B Products](#))

Background: Name/Gene ID: FAM50B

Synonyms: FAM50B, D6S2654E, X5L, Protein FAM50B, Protein XAP-5-like

Gene ID: 26240

NCBI Accession: [NP_036267](#)

UniProt: [Q9Y247](#)

Application Details

Application Notes: Approved: WB (0.2 - 1 µg/mL)

Usage: Western Blot: Suggested dilution at 1 µg/mL in 5 % skim milk / PBS buffer, and HRP conjugated anti-Rabbit IgG should be diluted in 1: 50,000 - 100,000 as second antibody. ELISA titer in peptide based assay: 1:12500.

Comment: Target Species of Antibody: Human

Restrictions: For Research Use only

Handling

Format: Lyophilized

Reconstitution: Distilled water

Concentration: Lot specific

Buffer: Lyophilized from PBS with 2 % sucrose

Handling Advice: Avoid repeat freeze-thaw cycles.

Storage: 4 °C, -20 °C

Storage Comment: Long term: -20°C, the use of 50% glycerol is recommended if storing aliquots in -20°C for long term use (up to 1 year)

Short term (less than 1 week): 4°C. Avoid freeze-thaw cycles.

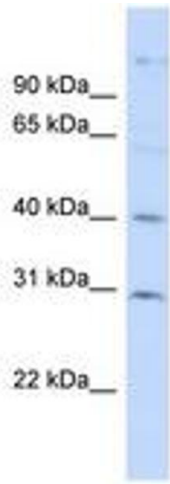


Image 1.