



Datasheet for ABIN6741891
anti-Peripherin antibody (AA 287-336)



[Go to Product page](#)

1 Image

Overview

Quantity:	100 µL
Target:	Peripherin (PRPH)
Binding Specificity:	AA 287-336
Reactivity:	Human, Rat, Mouse, Cow, Pig, Dog, Guinea Pig, Rabbit, Horse, Monkey, Bat, Hamster
Host:	Rabbit
Clonality:	Polyclonal
Conjugate:	This Peripherin antibody is un-conjugated
Application:	Western Blotting (WB)

Product Details

Immunogen:	Synthetic peptide located between aa287-336 of human PRPH (P41219, NP_006253). Percent identity by BLAST analysis: Human, Chimpanzee, Gorilla, Gibbon, Monkey, Marmoset, Mouse, Rat, Hamster, Elephant, Dog, Bovine, Bat, Rabbit, Horse, Pig, Opossum, Guinea pig, Platypus (100%), Galago, Stickleback, Zebrafish (92%), Turkey, Zebra finch, Chicken, Xenopus (85%). Type of Immunogen: Synthetic peptide
Isotype:	IgG
Specificity:	Human PRPH / Peripherin
Predicted Reactivity:	Percent identity by BLAST analysis: Human, Mouse, Rat, Dog, Rabbit, Horse, Pig (100%) Xenopus (85%).
Purification:	Immunoaffinity purified

Target Details

Target: Peripherin (PRPH)

Alternative Name: Peripherin ([PRPH Products](#))

Background: Name/Gene ID: PRPH

Synonyms: PRPH, NEF4, Neurofilament 4 (57kD), Peripherin, PRPH1, Neurofilament 4

Gene ID: 5630

NCBI Accession: [NP_006253](#)

UniProt: [P41219](#)

Application Details

Application Notes: Approved: WB (0.2 - 1 µg/mL)

Usage: Western Blot: Suggested dilution at 1 µg/mL in 5 % skim milk / PBS buffer, and HRP conjugated anti-Rabbit IgG should be diluted in 1: 50,000 - 100,000 as second antibody. ELISA titer in peptide based assay: 1:312500.

Comment: Target Species of Antibody: Human

Restrictions: For Research Use only

Handling

Format: Lyophilized

Reconstitution: Distilled water

Concentration: Lot specific

Buffer: Lyophilized from PBS with 2 % sucrose

Handling Advice: Avoid repeat freeze-thaw cycles.

Storage: 4 °C, -20 °C

Storage Comment: Long term: -20°C, the use of 50% glycerol is recommended if storing aliquots in -20°C for long term use (up to 1 year)

Short term (less than 1 week): 4°C. Avoid freeze-thaw cycles.

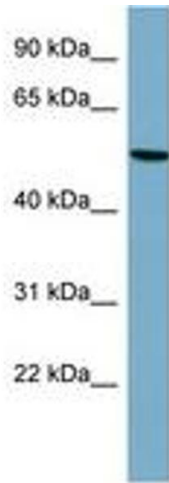


Image 1.