

Datasheet for ABIN6741894
anti-PSMC4 antibody (N-Term)[Go to Product page](#)

1 Image

Overview

Quantity:	100 µL
Target:	PSMC4
Binding Specificity:	N-Term
Reactivity:	Human, Mouse, Rat, Rabbit, Cow, Dog, Guinea Pig, Horse, Xenopus laevis, Monkey, Bat
Host:	Rabbit
Clonality:	Polyclonal
Conjugate:	This PSMC4 antibody is un-conjugated
Application:	Western Blotting (WB)

Product Details

Immunogen:	Synthetic peptide from N-Terminus of human PSMC4 (P43686, NP_006494). Percent identity by BLAST analysis: Human, Chimpanzee, Gorilla, Gibbon, Monkey, Galago, Marmoset, Mouse, Rat, Elephant, Panda, Dog, Bovine, Bat, Rabbit, Horse, Opossum, Guinea pig, Xenopus, Catfish, Salmon, Smelt (100%), Stickleback, Zebrafish (92%), Drosophila (90%). Type of Immunogen: Synthetic peptide
Isotype:	IgG
Specificity:	Human PSMC4 / TBP7
Predicted Reactivity:	Percent identity by BLAST analysis: Human, Mouse, Rabbit, Horse, Xenopus (100%) Zebrafish (92%).
Purification:	Immunoaffinity purified

Target Details

Target:	PSMC4
Alternative Name:	PSMC4 / TBP7 (PSMC4 Products)
Background:	Name/Gene ID: PSMC4 Family: Protease Regulatory Synonyms: PSMC4, MB67-interacting protein, MIP224, RPT3, S6, Tat-binding protein 7, Protease 26S subunit 6, TBP-7, TBP7
Gene ID:	5704
NCBI Accession:	NP_006494
UniProt:	P43686
Pathways:	Mitotic G1-G1/S Phases , DNA Replication , Synthesis of DNA , Ubiquitin Proteasome Pathway

Application Details

Application Notes:	Approved: WB (0.2 - 1 µg/mL) Usage: Western Blot: Suggested dilution at 1 µg/mL in 5 % skim milk / PBS buffer, and HRP conjugated anti-Rabbit IgG should be diluted in 1: 50,000 - 100,000 as second antibody. ELISA titer in peptide based assay: 1:312500.
Comment:	Target Species of Antibody: Human
Restrictions:	For Research Use only

Handling

Format:	Lyophilized
Reconstitution:	Distilled water
Concentration:	Lot specific
Buffer:	Lyophilized from PBS with 2 % sucrose
Handling Advice:	Avoid repeat freeze-thaw cycles.
Storage:	4 °C, -20 °C
Storage Comment:	Long term: -20°C, the use of 50% glycerol is recommended if storing aliquots in -20°C for long term use (up to 1 year)

Handling

Short term (less than 1 week): 4°C. Avoid freeze-thaw cycles.

Images

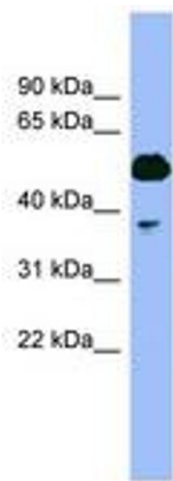


Image 1.