



[Go to Product page](#)

Datasheet for ABIN6741896
anti-CUTC antibody (AA 179-228)

1 Image

Overview

Quantity:	100 µL
Target:	CUTC
Binding Specificity:	AA 179-228
Reactivity:	Human, Mouse, Rat, Horse, Dog, Guinea Pig, Rabbit, Pig, Zebrafish (Danio rerio), Bat, Monkey
Host:	Rabbit
Clonality:	Polyclonal
Conjugate:	This CUTC antibody is un-conjugated
Application:	Western Blotting (WB)

Product Details

Immunogen:	Synthetic peptide located between aa179-228 of human CUTC (Q9NTM9, NP_057044). Percent identity by BLAST analysis: Human, Chimpanzee, Gibbon, Monkey, Galago, Marmoset, Mouse, Rat, Elephant, Panda, Dog, Bat, Rabbit, Horse, Pig, Opossum, Guinea pig (100%), Lizard (92%), Turkey, Zebra finch, Chicken, Stickleback, Pike, Zebrafish (85%). Type of Immunogen: Synthetic peptide
Isotype:	IgG
Specificity:	Human CUTC
Predicted Reactivity:	Percent identity by BLAST analysis: Human, Mouse, Rat, Dog, Guinea pig (100%) Chicken, Zebrafish (85%).
Purification:	Immunoaffinity purified

Target Details

Target:	CUTC
Alternative Name:	CUTC (CUTC Products)
Background:	Name/Gene ID: CUTC Synonyms: CUTC, CGI-32, RP11-483F11.3
Gene ID:	51076
NCBI Accession:	NP_057044
UniProt:	Q9NTM9
Pathways:	Transition Metal Ion Homeostasis

Application Details

Application Notes:	Approved: WB (0.2 - 1 µg/mL) Usage: Western Blot: Suggested dilution at 1 µg/mL in 5 % skim milk / PBS buffer, and HRP conjugated anti-Rabbit IgG should be diluted in 1: 50,000 - 100,000 as second antibody. ELISA titer in peptide based assay: 1:312500.
Comment:	Target Species of Antibody: Human
Restrictions:	For Research Use only

Handling

Format:	Lyophilized
Reconstitution:	Distilled water
Concentration:	Lot specific
Buffer:	Lyophilized from PBS with 2 % sucrose
Handling Advice:	Avoid repeat freeze-thaw cycles.
Storage:	4 °C,-20 °C
Storage Comment:	Long term: -20°C, the use of 50% glycerol is recommended if storing aliquots in -20°C for long term use (up to 1 year) Short term (less than 1 week): 4°C. Avoid freeze-thaw cycles.

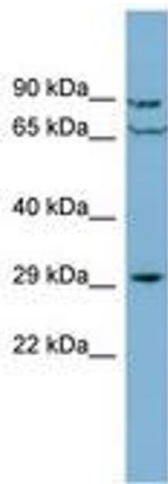


Image 1.