



Datasheet for ABIN6741898 **anti-GLOD4 antibody (AA 143-192)**



[Go to Product page](#)

1 Image

Overview

Quantity:	100 µL
Target:	GLOD4
Binding Specificity:	AA 143-192
Reactivity:	Human, Mouse, Rat, Rabbit, Monkey, Chicken
Host:	Rabbit
Clonality:	Polyclonal
Conjugate:	This GLOD4 antibody is un-conjugated
Application:	Western Blotting (WB)

Product Details

Immunogen:	Synthetic peptide located between aa143-192 of human GLOD4 (D3DTG9, NP_057164). Percent identity by BLAST analysis: Human, Gorilla, Gibbon, Monkey, Marmoset, Mouse, Panda, Rabbit, Chicken (100%), Galago, Hamster, Elephant, Dog, Bovine, Bat, Horse, Opossum, Turkey (92%), Pig, Zebra finch (85%), Rat (78%). Type of Immunogen: Synthetic peptide
Isotype:	IgG
Specificity:	Human GLOD4
Predicted Reactivity:	Percent identity by BLAST analysis: Human, Mouse (100%) Dog, Bovine, Horse (92%).
Purification:	Immunoaffinity purified

Target Details

Target:	GLOD4
Alternative Name:	HC71 / GLOD4 (GLOD4 Products)
Background:	Name/Gene ID: GLOD4 Synonyms: GLOD4, CGI-150, C17orf25, Glyoxalase domain containing 4, HC71
Gene ID:	51031
NCBI Accession:	NP_057164
UniProt:	Q9HC38

Application Details

Application Notes:	Approved: WB (0.2 - 1 µg/mL) Usage: Western Blot: Suggested dilution at 1 µg/mL in 5 % skim milk / PBS buffer, and HRP conjugated anti-Rabbit IgG should be diluted in 1: 50,000 - 100,000 as second antibody. ELISA titer in peptide based assay: 1:312500.
Comment:	Target Species of Antibody: Human
Restrictions:	For Research Use only

Handling

Format:	Lyophilized
Reconstitution:	Distilled water
Concentration:	Lot specific
Buffer:	Lyophilized from PBS with 2 % sucrose
Handling Advice:	Avoid repeat freeze-thaw cycles.
Storage:	4 °C, -20 °C
Storage Comment:	Long term: -20°C, the use of 50% glycerol is recommended if storing aliquots in -20°C for long term use (up to 1 year) Short term (less than 1 week): 4°C. Avoid freeze-thaw cycles.

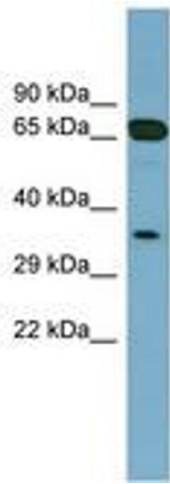


Image 1.