

Datasheet for ABIN6741899

**anti-Actin-Like 6B antibody (AA 323-372)**[Go to Product page](#)**1** Image

## Overview

Quantity:	100 µL
Target:	Actin-Like 6B (ACTL6B)
Binding Specificity:	AA 323-372
Reactivity:	Human, Mouse, Rat, Cow, Dog, Guinea Pig, Horse, Rabbit, Bat, Monkey, Pig
Host:	Rabbit
Clonality:	Polyclonal
Conjugate:	This Actin-Like 6B antibody is un-conjugated
Application:	Western Blotting (WB)

## Product Details

Immunogen:	Synthetic peptide located between aa323-372 of human ACTL6B (O94805, NP_057272). Percent identity by BLAST analysis: Human, Chimpanzee, Gorilla, Gibbon, Monkey, Galago, Marmoset, Mouse, Rat, Elephant, Panda, Dog, Bovine, Bat, Rabbit, Horse, Pig, Opossum, Guinea pig (100%), Lizard, Xenopus, Stickleback, Zebrafish (92%), Hamster, Turkey, Zebra finch, Chicken, Platypus (85%).  Type of Immunogen: Synthetic peptide
Isotype:	IgG
Specificity:	Human ACTL6B / BAF53B
Predicted Reactivity:	Percent identity by BLAST analysis: Mouse, Dog, Pig (100%) Zebrafish (92%).
Purification:	Immunoaffinity purified

## Target Details

Target:	Actin-Like 6B (ACTL6B)
Alternative Name:	BAF53B / ACTL6B ( <a href="#">ACTL6B Products</a> )
Background:	Name/Gene ID: ACTL6B  Synonyms: ACTL6B, Actin-related protein Baf53b, ACTL6, Actin-like 6B, Actin-like 6, ArpNalpha, BAF53B, BRG1-associated factor 53B, Actin-like protein 6B, HArpN alpha
Gene ID:	51412
NCBI Accession:	<a href="#">NP_057272</a>
UniProt:	<a href="#">O94805</a>

## Application Details

Application Notes:	Approved: WB (0.2 - 1 µg/mL)  Usage: Western Blot: Suggested dilution at 1 µg/mL in 5 % skim milk / PBS buffer, and HRP conjugated anti-Rabbit IgG should be diluted in 1: 50,000 - 100,000 as second antibody. ELISA titer in peptide based assay: 1:62500.
Comment:	Target Species of Antibody: Human
Restrictions:	For Research Use only

## Handling

Format:	Lyophilized
Reconstitution:	Distilled water
Concentration:	Lot specific
Buffer:	Lyophilized from PBS with 2 % sucrose
Handling Advice:	Avoid repeat freeze-thaw cycles.
Storage:	4 °C,-20 °C
Storage Comment:	Long term: -20°C, the use of 50% glycerol is recommended if storing aliquots in -20°C for long term use (up to 1 year)  Short term (less than 1 week): 4°C. Avoid freeze-thaw cycles.

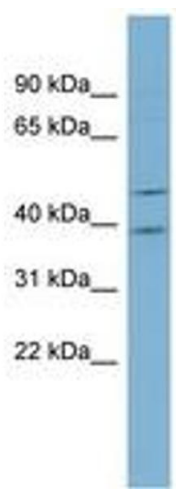


Image 1.