



Datasheet for ABIN6741903  
**anti-PRR16 antibody (AA 179-228)**



[Go to Product page](#)

1 Image

Overview

Quantity:	100 µL
Target:	PRR16
Binding Specificity:	AA 179-228
Reactivity:	Human, Mouse, Rat, Cow, Dog, Pig, Monkey, Bat, Chicken
Host:	Rabbit
Clonality:	Polyclonal
Conjugate:	This PRR16 antibody is un-conjugated
Application:	Western Blotting (WB)

Product Details

Immunogen:	Synthetic peptide located between aa179-228 of human PRR16 (Q569H4-3, NP_057728). Percent identity by BLAST analysis: Human, Chimpanzee, Gorilla, Gibbon, Marmoset, Mouse, Rat, Elephant, Bat, Pig, Opossum, Turkey, Zebra finch, Chicken, Platypus (100%), Horse (92%), Galago, Dog, Bovine (85%).  Type of Immunogen: Synthetic peptide
Isotype:	IgG
Specificity:	Human PRR16
Predicted Reactivity:	Percent identity by BLAST analysis: Human, Mouse, Rat, Pig, Chicken (100%) Horse (92%) Dog, Bovine (85%).
Purification:	Immunoaffinity purified

## Target Details

---

Target: PRR16

Alternative Name: PRR16 ([PRR16 Products](#))

Background: Name/Gene ID: PRR16

Synonyms: PRR16, DSC54, Proline rich 16, Proline-rich protein 16

Gene ID: 51334

NCBI Accession: [NP\\_057728](#)

UniProt: [Q569H4](#)

## Application Details

---

Application Notes: Approved: WB (0.2 - 1 µg/mL)

Usage: Western Blot: Suggested dilution at 1 µg/mL in 5 % skim milk / PBS buffer, and HRP conjugated anti-Rabbit IgG should be diluted in 1: 50,000 - 100,000 as second antibody. ELISA titer in peptide based assay: 1:312500.

Comment: Target Species of Antibody: Human

Restrictions: For Research Use only

## Handling

---

Format: Lyophilized

Reconstitution: Reconstitute with 50 µL sterile dH2O.

Concentration: Lot specific

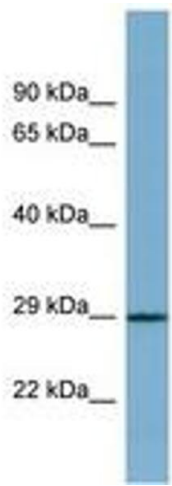
Buffer: Lyophilized from PBS with 2 % sucrose

Handling Advice: Avoid repeat freeze-thaw cycles.

Storage: 4 °C, -20 °C

Storage Comment: Long term: -20°C, the use of 50% glycerol is recommended if storing aliquots in -20°C for long term use (up to 1 year)

Short term (less than 1 week): 4°C. Avoid freeze-thaw cycles.



**Image 1.**