

Datasheet for ABIN6741909

anti-RACGAP1 antibody (AA 179-228)[Go to Product page](#)**1** Image

Overview

Quantity:	100 µL
Target:	RACGAP1
Binding Specificity:	AA 179-228
Reactivity:	Human, Mouse, Cow, Guinea Pig
Host:	Rabbit
Clonality:	Polyclonal
Conjugate:	This RACGAP1 antibody is un-conjugated
Application:	Western Blotting (WB)

Product Details

Immunogen:	Synthetic peptide located between aa179-228 of human RACGAP1 (Q9H0H5, NP_037409). Percent identity by BLAST analysis: Human, Chimpanzee, Marmoset, Bovine, Guinea pig (100%), Gorilla, Gibbon, Monkey, Dog, Rabbit (92%), Bat, Lizard (91%), Mouse, Hamster, Elephant (85%). Type of Immunogen: Synthetic peptide
Isotype:	IgG
Specificity:	Human RACGAP1
Predicted Reactivity:	Percent identity by BLAST analysis: Human, Bovine (100%) Dog, Rabbit (92%) Mouse (85%).
Purification:	Immunoaffinity purified

Target Details

Target:	RACGAP1
Alternative Name:	RACGAP1 / MGCRACTGAP (RACGAP1 Products)
Background:	Name/Gene ID: RACGAP1 Synonyms: RACGAP1, GTPase activating protein, ID-GAP, KIAA1478, MgcRacGAP, Protein CYK4 homolog, Male germ cell RacGap, CYK4, HsCYK-4
Gene ID:	29127
NCBI Accession:	NP_037409
UniProt:	Q9H0H5
Pathways:	Regulation of Actin Filament Polymerization , Myometrial Relaxation and Contraction , Regulation of G-Protein Coupled Receptor Protein Signaling , Signaling of Hepatocyte Growth Factor Receptor

Application Details

Application Notes:	Approved: WB (0.2 - 1 µg/mL) Usage: Western Blot: Suggested dilution at 1 µg/mL in 5 % skim milk / PBS buffer, and HRP conjugated anti-Rabbit IgG should be diluted in 1: 50,000 - 100,000 as second antibody. ELISA titer in peptide based assay: 1:1562500.
Comment:	Target Species of Antibody: Human
Restrictions:	For Research Use only

Handling

Format:	Lyophilized
Reconstitution:	Distilled water
Concentration:	Lot specific
Buffer:	Lyophilized from PBS with 2 % sucrose
Handling Advice:	Avoid repeat freeze-thaw cycles.
Storage:	4 °C,-20 °C
Storage Comment:	Long term: -20°C, the use of 50% glycerol is recommended if storing aliquots in -20°C for long

Handling

term use (up to 1 year)

Short term (less than 1 week): 4°C. Avoid freeze-thaw cycles.

Images

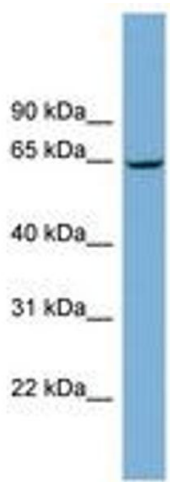


Image 1.