



Datasheet for ABIN6741918 **anti-GEM antibody (AA 35-84)**



[Go to Product page](#)

1 Image

Overview

Quantity:	100 µL
Target:	GEM
Binding Specificity:	AA 35-84
Reactivity:	Human, Mouse, Dog, Cow, Guinea Pig, Horse, Rabbit, Monkey, Hamster, Pig
Host:	Rabbit
Clonality:	Polyclonal
Conjugate:	This GEM antibody is un-conjugated
Application:	Western Blotting (WB)

Product Details

Immunogen:	Synthetic peptide located between aa35-84 of human GEM (P55040, NP_005252). Percent identity by BLAST analysis: Human, Chimpanzee, Gorilla, Orangutan, Gibbon, Monkey, Galago, Marmoset, Mouse, Hamster, Elephant, Panda, Dog, Bovine, Rabbit, Horse, Pig, Opossum, Guinea pig (100%), Rat, Bat, Platypus, Xenopus (92%), Lizard (85%), Zebra finch (84%). Type of Immunogen: Synthetic peptide
Isotype:	IgG
Specificity:	Human GEM
Predicted Reactivity:	Percent identity by BLAST analysis: Human, Mouse, Dog, Bovine, Pig (100%) Rat (92%).
Purification:	Immunoaffinity purified

Target Details

Target:	GEM
Alternative Name:	GEM / KIR (GEM Products)
Background:	Name/Gene ID: GEM Family: Ras GTPase superfamily IPR001806 Synonyms: GEM, GTP-binding protein GEM, KIR, RAS-like protein KIR
Gene ID:	2669
NCBI Accession:	NP_005252
UniProt:	P55040

Application Details

Application Notes:	Approved: WB (0.2 - 1 µg/mL) Usage: Western Blot: Suggested dilution at 1 µg/mL in 5 % skim milk / PBS buffer, and HRP conjugated anti-Rabbit IgG should be diluted in 1: 50,000 - 100,000 as second antibody. ELISA titer in peptide based assay: 1:62500.
Comment:	Target Species of Antibody: Human
Restrictions:	For Research Use only

Handling

Format:	Lyophilized
Reconstitution:	Distilled water
Concentration:	Lot specific
Buffer:	Lyophilized from PBS with 2 % sucrose
Handling Advice:	Avoid repeat freeze-thaw cycles.
Storage:	4 °C,-20 °C
Storage Comment:	Long term: -20°C, the use of 50% glycerol is recommended if storing aliquots in -20°C for long term use (up to 1 year) Short term (less than 1 week): 4°C. Avoid freeze-thaw cycles.

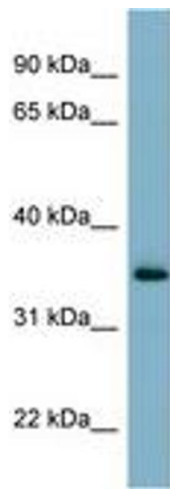


Image 1.