

Datasheet for ABIN6741919
anti-SLC35D3 antibody (AA 35-84)[Go to Product page](#)

1 Image

Overview

Quantity:	100 µL
Target:	SLC35D3
Binding Specificity:	AA 35-84
Reactivity:	Human, Mouse, Rat, Cow, Rabbit, Dog, Guinea Pig, Horse, Monkey, Bat, Pig
Host:	Rabbit
Clonality:	Polyclonal
Conjugate:	This SLC35D3 antibody is un-conjugated
Application:	Western Blotting (WB)

Product Details

Immunogen:	Synthetic peptide located between aa35-84 of human SLC35D3 (Q5M8T2, NP_001008783). Percent identity by BLAST analysis: Human, Chimpanzee, Gorilla, Gibbon, Monkey, Galago, Marmoset, Mouse, Rat, Elephant, Dog, Bovine, Bat, Rabbit, Horse, Pig, Opossum, Guinea pig (100%). Type of Immunogen: Synthetic peptide
Isotype:	IgG
Specificity:	Human SLC35D3
Predicted Reactivity:	Percent identity by BLAST analysis: Mouse, Rat, Bovine, Horse, Pig (100%).
Purification:	Immunoaffinity purified

Target Details

Target:	SLC35D3
Alternative Name:	SLC35D3 / FRCL1 (SLC35D3 Products)
Background:	Name/Gene ID: SLC35D3 Synonyms: SLC35D3, Frc, fringe-like 1, FRCL1, BA55K22.3
Gene ID:	340146
NCBI Accession:	NP_001008783
UniProt:	Q5M8T2

Application Details

Application Notes:	Approved: WB (0.2 - 1 µg/mL) Usage: Western Blot: Suggested dilution at 1 µg/mL in 5 % skim milk / PBS buffer, and HRP conjugated anti-Rabbit IgG should be diluted in 1: 50,000 - 100,000 as second antibody. ELISA titer in peptide based assay: 1:62500.
Comment:	Target Species of Antibody: Human
Restrictions:	For Research Use only

Handling

Format:	Lyophilized
Reconstitution:	Distilled water
Concentration:	Lot specific
Buffer:	Lyophilized from PBS with 2 % sucrose
Handling Advice:	Avoid repeat freeze-thaw cycles.
Storage:	4 °C, -20 °C
Storage Comment:	Long term: -20°C, the use of 50% glycerol is recommended if storing aliquots in -20°C for long term use (up to 1 year) Short term (less than 1 week): 4°C. Avoid freeze-thaw cycles.

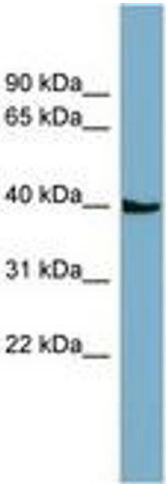


Image 1.