



[Go to Product page](#)

Datasheet for ABIN6741927  
**anti-RPE antibody (AA 71-120)**

1 Image

Overview

Quantity:	100 µL
Target:	RPE
Binding Specificity:	AA 71-120
Reactivity:	Human, Mouse, Rat, Dog, Horse, Rabbit, Pig, Monkey, Bat
Host:	Rabbit
Clonality:	Polyclonal
Conjugate:	This RPE antibody is un-conjugated
Application:	Western Blotting (WB)

Product Details

Immunogen:	Synthetic peptide located between aa71-120 of human RPE (Q96AT9, NP_954699). Percent identity by BLAST analysis: Human, Chimpanzee, Gorilla, Gibbon, Monkey, Galago, Marmoset, Mouse, Rat, Elephant, Panda, Dog, Bat, Rabbit, Horse, Pig, Opossum, Platypus (100%), Orangutan, Hamster, Bovine, Guinea pig, Chicken, Xenopus, Catfish, Zebrafish (92%), Lizard, Salmon (85%).  Type of Immunogen: Synthetic peptide
Isotype:	IgG
Specificity:	Human RPE
Predicted Reactivity:	Percent identity by BLAST analysis: Human, Mouse, Rat, Dog, Rabbit, Horse (100%) Bovine, Chicken, Xenopus, Zebrafish (92%).

## Product Details

---

Purification: Immunoaffinity purified

## Target Details

---

Target: RPE

Alternative Name: RPE ([RPE Products](#))

Background: Name/Gene ID: RPE

Synonyms: RPE, Ribulose-phosphate 3-epimerase, RPE2-1

Gene ID: 6120

NCBI Accession: [NP\\_954699](#)

UniProt: [Q96AT9](#)

## Application Details

---

Application Notes: Approved: WB (0.2 - 1 µg/mL)

Usage: Western Blot: Suggested dilution at 1 µg/mL in 5 % skim milk / PBS buffer, and HRP conjugated anti-Rabbit IgG should be diluted in 1: 50,000 - 100,000 as second antibody. ELISA titer in peptide based assay: 1:312500.

Comment: Target Species of Antibody: Human

Restrictions: For Research Use only

## Handling

---

Format: Lyophilized

Reconstitution: Distilled water

Concentration: Lot specific

Buffer: Lyophilized from PBS with 2 % sucrose

Handling Advice: Avoid repeat freeze-thaw cycles.

Storage: 4 °C,-20 °C

Storage Comment: Long term: -20°C, the use of 50% glycerol is recommended if storing aliquots in -20°C for long term use (up to 1 year)

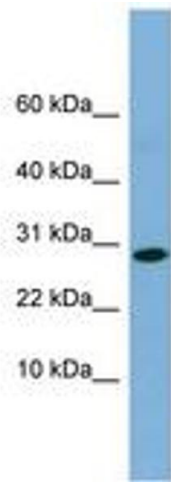
## Handling

---

Short term (less than 1 week): 4°C. Avoid freeze-thaw cycles.

## Images

---



**Image 1.**