



[Go to Product page](#)

Datasheet for ABIN6741943
anti-MRPL48 antibody (AA 71-120)

1 Image

Overview

Quantity:	100 µL
Target:	MRPL48
Binding Specificity:	AA 71-120
Reactivity:	Human, Mouse, Rat, Guinea Pig, Monkey, Pig
Host:	Rabbit
Clonality:	Polyclonal
Conjugate:	This MRPL48 antibody is un-conjugated
Application:	Western Blotting (WB)

Product Details

Immunogen:	Synthetic peptide located between aa71-120 of human MRPL48 (Q96GC5, NP_057139). Percent identity by BLAST analysis: Human, Chimpanzee, Gorilla, Gibbon, Marmoset, Mouse, Rat, Pig, Guinea pig (100%), Dog, Bovine, Bat, Rabbit (92%), Horse (85%), Elephant, Platypus (84%). Type of Immunogen: Synthetic peptide
Isotype:	IgG
Specificity:	Human MRPL48
Predicted Reactivity:	Percent identity by BLAST analysis: Human, Mouse, Rat, Pig, Guinea pig (100%) Dog (92%).
Purification:	Immunoaffinity purified

Target Details

Target: MRPL48

Alternative Name: MRPL48 ([MRPL48 Products](#))

Background: Name/Gene ID: MRPL48

Synonyms: MRPL48, CGI-118, L48MT, HSPC290, MRP-L48

Gene ID: 51642

NCBI Accession: [NP_057139](#)

UniProt: [Q96GC5](#)

Application Details

Application Notes: Approved: WB (0.2 - 1 µg/mL)

Usage: Western Blot: Suggested dilution at 1 µg/mL in 5 % skim milk / PBS buffer, and HRP conjugated anti-Rabbit IgG should be diluted in 1: 50,000 - 100,000 as second antibody. ELISA titer in peptide based assay: 1:62500.

Comment: Target Species of Antibody: Human

Restrictions: For Research Use only

Handling

Format: Lyophilized

Reconstitution: Distilled water

Concentration: Lot specific

Buffer: Lyophilized from PBS with 2 % sucrose

Handling Advice: Avoid repeat freeze-thaw cycles.

Storage: 4 °C, -20 °C

Storage Comment: Long term: -20°C, the use of 50% glycerol is recommended if storing aliquots in -20°C for long term use (up to 1 year)

Short term (less than 1 week): 4°C. Avoid freeze-thaw cycles.

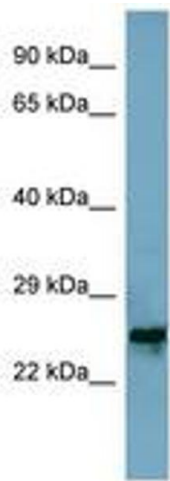


Image 1.