



[Go to Product page](#)

Datasheet for ABIN6741954  
**anti-UQCRFS1 antibody (N-Term)**

1 Image

Overview

Quantity:	100 µL
Target:	UQCRFS1
Binding Specificity:	N-Term
Reactivity:	Human, Mouse, Rat, Cow, Dog, Pig, Monkey
Host:	Rabbit
Clonality:	Polyclonal
Conjugate:	This UQCRFS1 antibody is un-conjugated
Application:	Western Blotting (WB)

Product Details

Immunogen:	Synthetic peptide from N-Terminus of human UQCRFS1 (P47985, NP_005994). Percent identity by BLAST analysis: Human, Chimpanzee, Gorilla, Orangutan, Monkey, Galago, Mouse, Rat, Elephant, Dog, Bovine, Pig (100%), Gibbon, Guinea pig (92%), Opossum (85%).  Type of Immunogen: Synthetic peptide
Isotype:	IgG
Specificity:	Human UQCRFS1
Predicted Reactivity:	Percent identity by BLAST analysis: Dog (100%).
Purification:	Immunoaffinity purified

## Target Details

---

Target:	UQCRFS1
Alternative Name:	UQCRFS1 ( <a href="#">UQCRFS1 Products</a> )
Background:	Name/Gene ID: UQCRFS1  Synonyms: UQCRFS1, Complex III subunit 5, Rieske iron-sulfur protein, RIP1, RISP, UQCR5, RIS1
Gene ID:	7386
NCBI Accession:	<a href="#">NP_005994</a>
UniProt:	<a href="#">P47985</a>
Pathways:	<a href="#">Proton Transport</a>

## Application Details

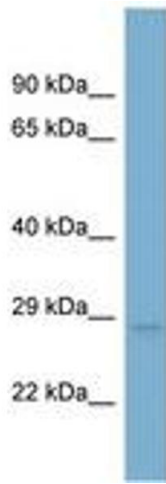
---

Application Notes:	Approved: WB (0.2 - 1 µg/mL)  Usage: Western Blot: Suggested dilution at 1 µg/mL in 5 % skim milk / PBS buffer, and HRP conjugated anti-Rabbit IgG should be diluted in 1: 50,000 - 100,000 as second antibody. ELISA titer in peptide based assay: 1:1562500.
Comment:	Target Species of Antibody: Human
Restrictions:	For Research Use only

## Handling

---

Format:	Lyophilized
Reconstitution:	Distilled water
Concentration:	Lot specific
Buffer:	Lyophilized from PBS with 2 % sucrose
Handling Advice:	Avoid repeat freeze-thaw cycles.
Storage:	4 °C,-20 °C
Storage Comment:	Long term: -20°C, the use of 50% glycerol is recommended if storing aliquots in -20°C for long term use (up to 1 year)  Short term (less than 1 week): 4°C. Avoid freeze-thaw cycles.



**Image 1.**