



Datasheet for ABIN6741967  
**anti-IRX1 antibody (AA 179-228)**



[Go to Product page](#)

1 Image

Overview

Quantity:	100 µL
Target:	IRX1
Binding Specificity:	AA 179-228
Reactivity:	Human, Mouse, Rat, Cow, Guinea Pig, Rabbit, Dog, Monkey
Host:	Rabbit
Clonality:	Polyclonal
Conjugate:	This IRX1 antibody is un-conjugated
Application:	Western Blotting (WB)

Product Details

Immunogen:	Synthetic peptide located between aa179-228 of human IRX1 (P78414, NP_077313). Percent identity by BLAST analysis: Human, Chimpanzee, Gorilla, Monkey, Galago, Mouse, Rat, Elephant, Dog, Bovine, Rabbit, Guinea pig (100%), Horse, Platypus (92%), Opossum (90%), Zebra finch, Chicken, Xenopus (85%).  Type of Immunogen: Synthetic peptide
Isotype:	IgG
Specificity:	Human IRX1
Predicted Reactivity:	Percent identity by BLAST analysis: Human, Mouse, Rat, Dog, Bovine, Rabbit, Guinea pig (100%) Chicken (85%).
Purification:	Immunoaffinity purified

## Target Details

---

Target:	IRX1
Alternative Name:	IRX1 ( <a href="#">IRX1 Products</a> )
Background:	Name/Gene ID: IRX1  Synonyms: IRX1, Iroquois homeobox protein 1, IRXA1, Homeodomain protein IRXA1, Iroquois homeobox 1, IRX-5
Gene ID:	79192
NCBI Accession:	<a href="#">NP_077313</a>
UniProt:	<a href="#">P78414</a>
Pathways:	<a href="#">Tube Formation</a>

## Application Details

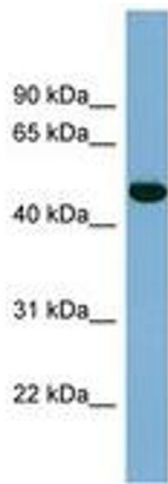
---

Application Notes:	Approved: WB (0.2 - 1 µg/mL)  Usage: Western Blot: Suggested dilution at 1.0 µg/mL in 5 % skim milk / PBS buffer, and HRP conjugated anti-Rabbit IgG should be diluted in 1: 50,000 - 100,000 as second antibody. ELISA titer in peptide based assay: 1:12500.
Comment:	Target Species of Antibody: Human
Restrictions:	For Research Use only

## Handling

---

Format:	Lyophilized
Reconstitution:	Distilled water
Concentration:	Lot specific
Buffer:	Lyophilized from PBS with 2 % sucrose
Handling Advice:	Avoid repeat freeze-thaw cycles.
Storage:	4 °C, -20 °C
Storage Comment:	Long term: -20°C, the use of 50% glycerol is recommended if storing aliquots in -20°C for long term use (up to 1 year)  Short term (less than 1 week): 4°C. Avoid freeze-thaw cycles.



**Image 1.**