



[Go to Product page](#)

Datasheet for ABIN6741969  
**anti-IRX2 antibody (AA 107-156)**

1 Image

### Overview

Quantity:	100 µL
Target:	IRX2
Binding Specificity:	AA 107-156
Reactivity:	Human, Mouse, Rat, Dog, Horse, Guinea Pig, Cow, Rabbit, Zebrafish (Danio rerio), Bat, Chicken, Monkey, Xenopus laevis
Host:	Rabbit
Clonality:	Polyclonal
Conjugate:	This IRX2 antibody is un-conjugated
Application:	Western Blotting (WB)

### Product Details

Immunogen:	Synthetic peptide located between aa107-156 of human IRX2 (Q9BZ11, NP_150366). Percent identity by BLAST analysis: Human, Chimpanzee, Gorilla, Gibbon, Monkey, Galago, Marmoset, Mouse, Rat, Elephant, Dog, Bovine, Bat, Rabbit, Horse, Opossum, Guinea pig, Zebra finch, Chicken, Platypus, Xenopus, Stickleback, Zebrafish (100%).  Type of Immunogen: Synthetic peptide
Isotype:	IgG
Specificity:	Human IRX2
Predicted Reactivity:	Percent identity by BLAST analysis: Human, Mouse, Rat, Dog, Bovine, Rabbit, Guinea pig, Chicken, Xenopus, Zebrafish (100%).

## Product Details

---

Purification: Immunoaffinity purified

## Target Details

---

Target: IRX2

Alternative Name: IRX2 ([IRX2 Products](#))

Background: Name/Gene ID: IRX2

Synonyms: IRX2, IRXA2, Homeodomain protein IRXA2, Iroquois homeobox 2, Iroquois homeobox protein 2

Gene ID: 153572

NCBI Accession: [NP\\_150366](#)

UniProt: [Q9BZ11](#)

Pathways: [Tube Formation](#)

## Application Details

---

Application Notes: Approved: WB (0.2 - 1 µg/mL)

Usage: Western Blot: Suggested dilution at 1.0 µg/mL in 5 % skim milk / PBS buffer, and HRP conjugated anti-Rabbit IgG should be diluted in 1: 50,000 - 100,000 as second antibody. ELISA titer in peptide based assay: 1:312500.

Comment: Target Species of Antibody: Human

Restrictions: For Research Use only

## Handling

---

Format: Lyophilized

Reconstitution: Distilled water

Concentration: Lot specific

Buffer: Lyophilized from PBS with 2 % sucrose

Handling Advice: Avoid repeat freeze-thaw cycles.

Storage: 4 °C, -20 °C

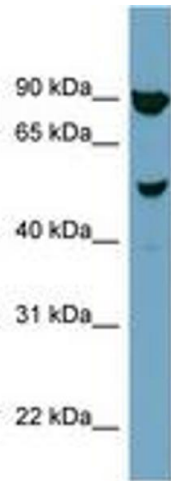
## Handling

---

Storage Comment: Long term: -20°C, the use of 50% glycerol is recommended if storing aliquots in -20°C for long term use (up to 1 year)  
Short term (less than 1 week): 4°C. Avoid freeze-thaw cycles.

## Images

---



**Image 1.**