

Datasheet for ABIN6741986
anti-Neuroserpin antibody (AA 179-228)[Go to Product page](#)

1 Image

Overview

Quantity:	100 µL
Target:	Neuroserpin (SERPINI1)
Binding Specificity:	AA 179-228
Reactivity:	Human, Mouse, Rat, Cow, Rabbit, Dog, Guinea Pig, Horse, Pig, Chicken, Xenopus laevis, Hamster, Monkey, Bat
Host:	Rabbit
Clonality:	Polyclonal
Conjugate:	This Neuroserpin antibody is un-conjugated
Application:	Western Blotting (WB)

Product Details

Immunogen:	Synthetic peptide located between aa179-228 of human SERPINI1 (Q99574, NP_005016). Percent identity by BLAST analysis: Human, Chimpanzee, Gorilla, Monkey, Galago, Marmoset, Mouse, Rat, Hamster, Elephant, Panda, Dog, Bovine, Bat, Rabbit, Horse, Pig, Opossum, Guinea pig, Turkey, Zebra finch, Chicken, Platypus, Lizard, Xenopus (100%), Salmon, Zebrafish (92%), Gibbon (85%), Stickleback (84%). Type of Immunogen: Synthetic peptide
Isotype:	IgG
Specificity:	Human SERPINI1 / Neuroserpin
Predicted Reactivity:	Percent identity by BLAST analysis: Human, Mouse, Dog, Bovine, Rabbit, Horse, Xenopus

Product Details

(100%) Zebrafish (92%).

Purification: Immunoaffinity purified

Target Details

Target: Neuroserpin (SERPINI1)

Alternative Name: Neuroserpin ([SERPINI1 Products](#))

Background: Name/Gene ID: SERPINI1

Synonyms: SERPINI1, Neuroserpin, Peptidase inhibitor 12, PI12, Serpin I1, PI-12, Protease inhibitor 12

Gene ID: 5274

NCBI Accession: [NP_005016](#)

UniProt: [Q99574](#)

Pathways: [Regulation of Hormone Metabolic Process](#)

Application Details

Application Notes: Approved: WB (0.2 - 1 µg/mL)

Usage: Western Blot: Suggested dilution at 1.0 µg/mL in 5 % skim milk / PBS buffer, and HRP conjugated anti-Rabbit IgG should be diluted in 1: 50,000 - 100,000 as second antibody. ELISA titer in peptide based assay: 1:312500.

Comment: Target Species of Antibody: Human

Restrictions: For Research Use only

Handling

Format: Lyophilized

Reconstitution: Distilled water

Concentration: Lot specific

Buffer: Lyophilized from PBS with 2 % sucrose

Handling Advice: Avoid repeat freeze-thaw cycles.

Handling

Storage:	4 °C,-20 °C
Storage Comment:	Long term: -20°C, the use of 50% glycerol is recommended if storing aliquots in -20°C for long term use (up to 1 year) Short term (less than 1 week): 4°C. Avoid freeze-thaw cycles.

Images

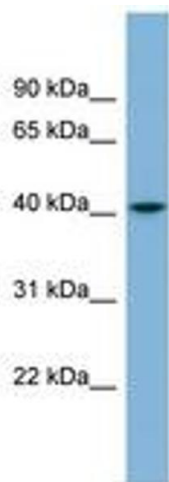


Image 1.