

Datasheet for ABIN6741992

anti-Acetylcholinesterase antibody (AA 359-408)



[Go to Product page](#)

1 Image

Overview

Quantity:	100 µL
Target:	Acetylcholinesterase (AChE)
Binding Specificity:	AA 359-408
Reactivity:	Human, Zebrafish (Danio rerio)
Host:	Rabbit
Clonality:	Polyclonal
Conjugate:	This Acetylcholinesterase antibody is un-conjugated
Application:	Western Blotting (WB)

Product Details

Immunogen:	Synthetic peptide located between aa359-408 of human ACHE (P22303, NP_000656). Percent identity by BLAST analysis: Human, Chimpanzee, Gorilla, Gibbon, Monkey, Stickleback, Zebrafish (100%), Galago, Marmoset, Mouse, Rat, Elephant, Panda, Dog, Cat, Bovine, Bat, Horse, Guinea pig (92%), Pufferfish (91%), Rabbit, Opossum, Chicken, Platypus (85%). Type of Immunogen: Synthetic peptide
Isotype:	IgG
Specificity:	Human ACHE / Acetylcholinesterase
Predicted Reactivity:	Percent identity by BLAST analysis: Human, Zebrafish (100%) Mouse, Rat, Dog, Bovine, Guinea pig (92%).
Purification:	Immunoaffinity purified

Target Details

Target:	Acetylcholinesterase (AChE)
Alternative Name:	ACHE / Acetylcholinesterase (AChE Products)
Background:	Name/Gene ID: ACHE Synonyms: ACHE, ACEE, Acetylcholinesterase, N-ACHE, Yt blood group, ARACHE, YT
Gene ID:	43
NCBI Accession:	NP_000656
UniProt:	P22303
Pathways:	Skeletal Muscle Fiber Development

Application Details

Application Notes:	Approved: WB (0.2 - 1 µg/mL) Usage: Western Blot: Suggested dilution at 1.0 µg/mL in 5 % skim milk / PBS buffer, and HRP conjugated anti-Rabbit IgG should be diluted in 1: 50,000 - 100,000 as second antibody. ELISA titer in peptide based assay: 1:62500.
Comment:	Target Species of Antibody: Human
Restrictions:	For Research Use only

Handling

Format:	Lyophilized
Reconstitution:	Distilled water
Concentration:	Lot specific
Buffer:	Lyophilized from PBS with 2 % sucrose
Handling Advice:	Avoid repeat freeze-thaw cycles.
Storage:	4 °C,-20 °C
Storage Comment:	Long term: -20°C, the use of 50% glycerol is recommended if storing aliquots in -20°C for long term use (up to 1 year) Short term (less than 1 week): 4°C. Avoid freeze-thaw cycles.

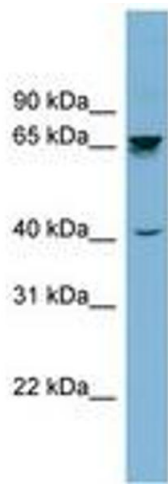


Image 1.