



[Go to Product page](#)

Datasheet for ABIN6741993
anti-TUBE1 antibody (AA 179-228)

1 Image

Overview

Quantity:	100 µL
Target:	TUBE1
Binding Specificity:	AA 179-228
Reactivity:	Human, Guinea Pig, Horse, Dog, Rabbit, Cow, Monkey, Pig, Bat
Host:	Rabbit
Clonality:	Polyclonal
Conjugate:	This TUBE1 antibody is un-conjugated
Application:	Western Blotting (WB)

Product Details

Immunogen:	Synthetic peptide located between aa179-228 of human TUBE1 (Q9UJT0, NP_057346). Percent identity by BLAST analysis: Human, Chimpanzee, Gorilla, Gibbon, Monkey, Galago, Marmoset, Panda, Dog, Bovine, Bat, Rabbit, Horse, Pig, Guinea pig (100%), Mouse, Rat, Hamster, Elephant, Opossum, Turkey, Zebra finch, Chicken, Platypus, Lizard, Xenopus, Zebrafish (92%), Stickleback, Pufferfish, Sea squirt (85%), Paramecium (81%). Type of Immunogen: Synthetic peptide
Isotype:	IgG
Specificity:	Human TUBE1
Predicted Reactivity:	Percent identity by BLAST analysis: Human, Dog, Bovine, Rabbit, Horse, Pig (100%) Rat, Chicken, Xenopus, Zebrafish (92%).

Product Details

Purification: Immunoaffinity purified

Target Details

Target: TUBE1

Alternative Name: TUBE1 ([TUBE1 Products](#))

Background: Name/Gene ID: TUBE1

Synonyms: TUBE1, Epsilon-tubulin, TUBE, Tubulin epsilon chain, DJ142L7.2, Tubulin, epsilon 1

Gene ID: 51175

NCBI Accession: [NP_057346](#)

UniProt: [Q9UJT0](#)

Pathways: [Microtubule Dynamics](#)

Application Details

Application Notes: Approved: WB (0.2 - 1 µg/mL)

Usage: Western Blot: Suggested dilution at 1.0 µg/mL in 5 % skim milk / PBS buffer, and HRP conjugated anti-Rabbit IgG should be diluted in 1: 50,000 - 100,000 as second antibody. ELISA titer in peptide based assay: 1:1562500.

Comment: Target Species of Antibody: Human

Restrictions: For Research Use only

Handling

Format: Lyophilized

Reconstitution: Distilled water

Concentration: Lot specific

Buffer: Lyophilized from PBS with 2 % sucrose

Handling Advice: Avoid repeat freeze-thaw cycles.

Storage: 4 °C, -20 °C

Storage Comment: Long term: -20°C, the use of 50% glycerol is recommended if storing aliquots in -20°C for long

Handling

term use (up to 1 year)

Short term (less than 1 week): 4°C. Avoid freeze-thaw cycles.

Images

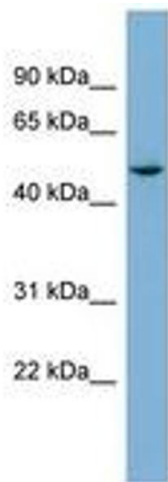


Image 1.