



[Go to Product page](#)

Datasheet for ABIN6741995
anti-HP1BP3 antibody (AA 71-120)

1 Image

Overview

Quantity:	100 µL
Target:	HP1BP3
Binding Specificity:	AA 71-120
Reactivity:	Human, Mouse, Rat, Rabbit, Cow, Dog, Horse, Pig, Monkey, Bat
Host:	Rabbit
Clonality:	Polyclonal
Conjugate:	This HP1BP3 antibody is un-conjugated
Application:	Western Blotting (WB)

Product Details

Immunogen:	Synthetic peptide located between aa71-120 of human HP1BP3 (Q5SSJ5, NP_057371). Percent identity by BLAST analysis: Human, Chimpanzee, Gibbon, Monkey, Galago, Marmoset, Mouse, Elephant, Panda, Dog, Bovine, Bat, Rabbit, Horse, Pig, Opossum (100%), Hamster, Xenopus (92%), Rat (78%). Type of Immunogen: Synthetic peptide
Isotype:	IgG
Specificity:	Human HP1BP3
Predicted Reactivity:	Percent identity by BLAST analysis: Human, Mouse, Dog, Rabbit, Horse, Pig (100%).
Purification:	Immunoaffinity purified

Target Details

Target:	HP1BP3
Alternative Name:	HP1BP3 (HP1BP3 Products)
Background:	Name/Gene ID: HP1BP3 Synonyms: HP1BP3, HP1-BP74, Protein HP1-BP74, RP5-930J4.3
Gene ID:	50809
NCBI Accession:	NP_057371
UniProt:	Q5SSJ5

Application Details

Application Notes:	Approved: WB (0.2 - 1 µg/mL) Usage: Western Blot: Suggested dilution at 1.0 µg/mL in 5 % skim milk / PBS buffer, and HRP conjugated anti-Rabbit IgG should be diluted in 1: 50,000 - 100,000 as second antibody. ELISA titer in peptide based assay: 1:312500.
Comment:	Target Species of Antibody: Human
Restrictions:	For Research Use only

Handling

Format:	Lyophilized
Reconstitution:	Distilled water
Concentration:	Lot specific
Buffer:	Lyophilized from PBS with 2 % sucrose
Handling Advice:	Avoid repeat freeze-thaw cycles.
Storage:	4 °C, -20 °C
Storage Comment:	Long term: -20°C, the use of 50% glycerol is recommended if storing aliquots in -20°C for long term use (up to 1 year) Short term (less than 1 week): 4°C. Avoid freeze-thaw cycles.

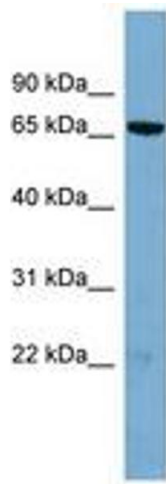


Image 1.