



[Go to Product page](#)

Datasheet for ABIN6742007
anti-RING1 antibody (AA 215-264)

1 Image

Overview

Quantity:	100 µL
Target:	RING1
Binding Specificity:	AA 215-264
Reactivity:	Human, Rat, Mouse, Dog, Cow, Guinea Pig, Horse, Rabbit, Hamster, Pig, Bat
Host:	Rabbit
Clonality:	Polyclonal
Conjugate:	This RING1 antibody is un-conjugated
Application:	Western Blotting (WB)

Product Details

Immunogen:	Synthetic peptide located between aa215-264 of human RING1 (Q06587, NP_002922). Percent identity by BLAST analysis: Human, Chimpanzee, Gorilla, Gibbon, Monkey, Galago, Mouse, Rat, Hamster, Elephant, Panda, Dog, Bovine, Bat, Rabbit, Horse, Pig, Guinea pig (100%), Marmoset (92%). Type of Immunogen: Synthetic peptide
Isotype:	IgG
Specificity:	Human RING1
Predicted Reactivity:	Percent identity by BLAST analysis: Human, Mouse, Rat, Dog, Bovine, Rabbit, Pig (100%).
Purification:	Immunoaffinity purified

Target Details

Target:	RING1
Alternative Name:	RING1 (RING1 Products)
Background:	Name/Gene ID: RING1 Synonyms: RING1, Polycomb complex protein RING1, Ring finger protein 1, RING1A, RNF1
Gene ID:	6015
NCBI Accession:	NP_002922
UniProt:	Q06587

Application Details

Application Notes:	Approved: WB (0.2 - 1 µg/mL) Usage: Western Blot: Suggested dilution at 1.0 µg/mL in 5 % skim milk / PBS buffer, and HRP conjugated anti-Rabbit IgG should be diluted in 1: 50,000 - 100,000 as second antibody. ELISA titer in peptide based assay: 1:312500.
Comment:	Target Species of Antibody: Human
Restrictions:	For Research Use only

Handling

Format:	Lyophilized
Reconstitution:	Distilled water
Concentration:	Lot specific
Buffer:	Lyophilized from PBS with 2 % sucrose
Handling Advice:	Avoid repeat freeze-thaw cycles.
Storage:	4 °C, -20 °C
Storage Comment:	Long term: -20°C, the use of 50% glycerol is recommended if storing aliquots in -20°C for long term use (up to 1 year) Short term (less than 1 week): 4°C. Avoid freeze-thaw cycles.

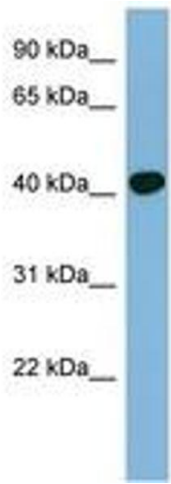


Image 1.