

Datasheet for ABIN6742009  
**anti-G3BP1 antibody (AA 107-156)**



[Go to Product page](#)

1 Image

## Overview

Quantity:	100 µL
Target:	G3BP1
Binding Specificity:	AA 107-156
Reactivity:	Human, Mouse, Rat, Dog, Horse, Guinea Pig, Monkey, Rabbit, Pig
Host:	Rabbit
Clonality:	Polyclonal
Conjugate:	This G3BP1 antibody is un-conjugated
Application:	Western Blotting (WB)

## Product Details

Immunogen:	Synthetic peptide located between aa107-156 of human G3BP1 (Q13283, NP_005745). Percent identity by BLAST analysis: Human, Chimpanzee, Gorilla, Orangutan, Gibbon, Monkey, Galago, Marmoset, Mouse, Rat, Elephant, Dog, Rabbit, Horse, Pig, Guinea pig, Platypus (100%), Bovine, Opossum (92%).  Type of Immunogen: Synthetic peptide
Isotype:	IgG
Specificity:	Human G3BP1 / G3BP
Predicted Reactivity:	Percent identity by BLAST analysis: Human, Mouse, Rat, Dog, Horse (100%) Bovine (92%) Guinea pig (85%).
Purification:	Immunoaffinity purified

## Target Details

---

Target:	G3BP1
Alternative Name:	G3BP1 / G3BP ( <a href="#">G3BP1 Products</a> )
Background:	Name/Gene ID: G3BP1  Synonyms: G3BP1, HDH-VIII, G3BP-1, G3BP, GAP binding protein, HDH VIII
Gene ID:	10146
NCBI Accession:	<a href="#">NP_005745</a>
UniProt:	<a href="#">Q13283</a>
Pathways:	<a href="#">SARS-CoV-2 Protein Interactome</a>

## Application Details

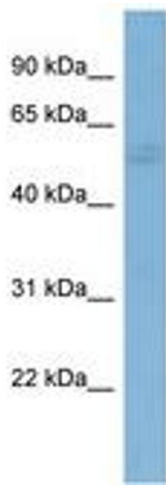
---

Application Notes:	Approved: WB (0.2 - 1 µg/mL)  Usage: Western Blot: Suggested dilution at 1.0 µg/mL in 5 % skim milk / PBS buffer, and HRP conjugated anti-Rabbit IgG should be diluted in 1: 50,000 - 100,000 as second antibody. ELISA titer in peptide based assay: 1:312500.
Comment:	Target Species of Antibody: Human
Restrictions:	For Research Use only

## Handling

---

Format:	Lyophilized
Reconstitution:	Distilled water
Concentration:	Lot specific
Buffer:	Lyophilized from PBS with 2 % sucrose
Handling Advice:	Avoid repeat freeze-thaw cycles.
Storage:	4 °C,-20 °C
Storage Comment:	Long term: -20°C, the use of 50% glycerol is recommended if storing aliquots in -20°C for long term use (up to 1 year)  Short term (less than 1 week): 4°C. Avoid freeze-thaw cycles.



**Image 1.**