



[Go to Product page](#)

Datasheet for ABIN6742014
anti-SETBP1 antibody (C-Term)

1 Image

Overview

Quantity:	100 µL
Target:	SETBP1
Binding Specificity:	C-Term
Reactivity:	Human, Mouse, Rat, Monkey
Host:	Rabbit
Clonality:	Polyclonal
Conjugate:	This SETBP1 antibody is un-conjugated
Application:	Western Blotting (WB)

Product Details

Immunogen:	Synthetic peptide from C-Terminus of human SETBP1 (Q9Y6X0, NP_056374). Percent identity by BLAST analysis: Human, Gorilla, Gibbon, Monkey, Marmoset (100%), Galago, Bovine, Rabbit, Horse, Pig (92%), Opossum, Platypus (85%), Mouse, Rat (78%). Type of Immunogen: Synthetic peptide
Isotype:	IgG
Specificity:	Human SETBP1
Predicted Reactivity:	Percent identity by BLAST analysis: Bovine, Rabbit, Horse, Pig (92%).
Purification:	Immunoaffinity purified

Target Details

Target: SETBP1

Alternative Name: SETBP1 / SEB ([SETBP1 Products](#))

Background: Name/Gene ID: SETBP1

Synonyms: SETBP1, KIAA0437, SET binding protein 1, SET-binding protein, SEB

Gene ID: 26040

NCBI Accession: [NP_056374](#)

UniProt: [Q9Y6X0](#)

Application Details

Application Notes: Approved: WB (0.2 - 1 µg/mL)

Usage: Western Blot: Suggested dilution at 1.0 µg/mL in 5 % skim milk / PBS buffer, and HRP conjugated anti-Rabbit IgG should be diluted in 1: 50,000 - 100,000 as second antibody. ELISA titer in peptide based assay: 1:1562500.

Comment: Target Species of Antibody: Human

Restrictions: For Research Use only

Handling

Format: Lyophilized

Reconstitution: Distilled water

Concentration: Lot specific

Buffer: Lyophilized from PBS with 2 % sucrose

Handling Advice: Avoid repeat freeze-thaw cycles.

Storage: 4 °C, -20 °C

Storage Comment: Long term: -20°C, the use of 50% glycerol is recommended if storing aliquots in -20°C for long term use (up to 1 year)

Short term (less than 1 week): 4°C. Avoid freeze-thaw cycles.

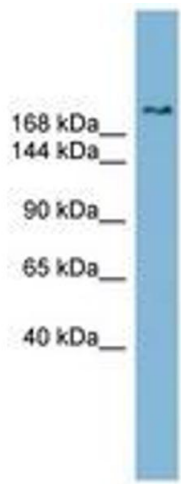


Image 1.