



[Go to Product page](#)

Datasheet for ABIN6742016
anti-SRSF12 antibody (AA 179-228)

1 Image

Overview

| | |
|----------------------|---|
| Quantity: | 100 µL |
| Target: | SRSF12 |
| Binding Specificity: | AA 179-228 |
| Reactivity: | Human, Cow, Guinea Pig, Horse, Rabbit, Bat, Monkey, Pig |
| Host: | Rabbit |
| Clonality: | Polyclonal |
| Conjugate: | This SRSF12 antibody is un-conjugated |
| Application: | Western Blotting (WB) |

Product Details

| | |
|-----------------------|--|
| Immunogen: | Synthetic peptide located between aa179-228 of human SRSF12 (Q8WXF0, NP_542781). Percent identity by BLAST analysis: Human, Chimpanzee, Gorilla, Gibbon, Monkey, Galago, Marmoset, Bovine, Bat, Rabbit, Horse, Pig, Guinea pig (100%), Elephant (92%), Mouse (84%). Type of Immunogen: Synthetic peptide |
| Isotype: | IgG |
| Specificity: | Human SRSF12 / SFRS13B |
| Predicted Reactivity: | Percent identity by BLAST analysis: Human (100%). |
| Purification: | Immunoaffinity purified |

Target Details

| | |
|-------------------|--|
| Target: | SRSF12 |
| Alternative Name: | SRSF12 (SRSF12 Products) |
| Background: | Name/Gene ID: SRSF12 Synonyms: SRSF12, 35 kDa SR repressor protein, RP11-63L7.3, SRrp35, SR splicing factor 12, SFRS13B, SFRS19 |
| Gene ID: | 135295 |
| NCBI Accession: | NP_542781 |
| UniProt: | Q8WXF0 |
| Pathways: | Ribonucleoprotein Complex Subunit Organization |

Application Details

| | |
|--------------------|---|
| Application Notes: | Approved: WB (0.2 - 1 µg/mL) Usage: Western Blot: Suggested dilution at 1.0 µg/mL in 5 % skim milk / PBS buffer, and HRP conjugated anti-Rabbit IgG should be diluted in 1: 50,000 - 100,000 as second antibody. ELISA titer in peptide based assay: 1:312500. |
| Comment: | Target Species of Antibody: Human |
| Restrictions: | For Research Use only |

Handling

| | |
|------------------|---|
| Format: | Lyophilized |
| Reconstitution: | Distilled water |
| Concentration: | Lot specific |
| Buffer: | Lyophilized from PBS with 2 % sucrose |
| Handling Advice: | Avoid repeat freeze-thaw cycles. |
| Storage: | 4 °C, -20 °C |
| Storage Comment: | Long term: -20°C, the use of 50% glycerol is recommended if storing aliquots in -20°C for long term use (up to 1 year) Short term (less than 1 week): 4°C. Avoid freeze-thaw cycles. |

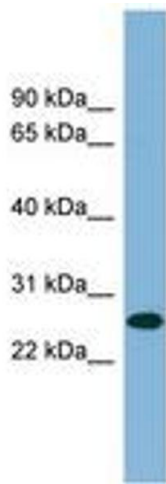


Image 1.