

Datasheet for ABIN6742017  
**anti-SLC25A20 antibody (AA 143-192)**[Go to Product page](#)

## 1 Image

## Overview

Quantity:	100 µL
Target:	SLC25A20
Binding Specificity:	AA 143-192
Reactivity:	Mouse, Human, Rat, Cow, Sheep, Hamster, Monkey
Host:	Rabbit
Clonality:	Polyclonal
Conjugate:	This SLC25A20 antibody is un-conjugated
Application:	Western Blotting (WB)

## Product Details

Immunogen:	Synthetic peptide located between aa143-192 of human SLC25A20 (O43772, NP_000378). Percent identity by BLAST analysis: Human, Chimpanzee, Gorilla, Orangutan, Gibbon, Monkey, Marmoset, Mouse, Rat, Hamster (100%), Galago, Dog, Guinea pig (92%), Sheep, Bat, Rabbit, Horse, Pig, Opossum, Platypus (85%).  Type of Immunogen: Synthetic peptide
Isotype:	IgG
Specificity:	Human SLC25A20
Predicted Reactivity:	Percent identity by BLAST analysis: Human, Mouse, Rat (100%) Dog (92%) Sheep (85%).
Purification:	Immunoaffinity purified

## Target Details

Target:	SLC25A20
Alternative Name:	SLC25A20 / CACT ( <a href="#">SLC25A20 Products</a> )
Background:	Name/Gene ID: SLC25A20 Subfamily: Mitochondrial carrier Family: Transporter  Synonyms: SLC25A20, CACT, CAC
Gene ID:	788
NCBI Accession:	<a href="#">NP_000378</a>
UniProt:	<a href="#">O43772</a>
Pathways:	<a href="#">TCR Signaling</a> , <a href="#">Production of Molecular Mediator of Immune Response</a> , <a href="#">Maintenance of Protein Location</a> , <a href="#">Toll-Like Receptors Cascades</a>

## Application Details

Application Notes:	Approved: WB (0.2 - 1 µg/mL)  Usage: Western Blot: Suggested dilution at 1.0 µg/mL in 5 % skim milk / PBS buffer, and HRP conjugated anti-Rabbit IgG should be diluted in 1: 50,000 - 100,000 as second antibody. ELISA titer in peptide based assay: 1:62500.
Comment:	Target Species of Antibody: Human
Restrictions:	For Research Use only

## Handling

Format:	Lyophilized
Reconstitution:	Distilled water
Concentration:	Lot specific
Buffer:	Lyophilized from PBS with 2 % sucrose
Handling Advice:	Avoid repeat freeze-thaw cycles.
Storage:	4 °C,-20 °C
Storage Comment:	Long term: -20°C, the use of 50% glycerol is recommended if storing aliquots in -20°C for long

Handling

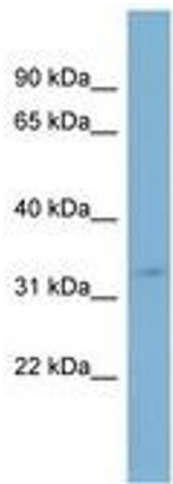
---

term use (up to 1 year)

Short term (less than 1 week): 4°C. Avoid freeze-thaw cycles.

Images

---



**Image 1.**