



Datasheet for ABIN6742018
anti-DNAJB12 antibody (AA 287-336)



[Go to Product page](#)

1 Image

Overview

Quantity:	100 µL
Target:	DNAJB12
Binding Specificity:	AA 287-336
Reactivity:	Human, Mouse, Rat, Horse, Dog, Zebrafish (Danio rerio), Goat, Guinea Pig, Hamster
Host:	Rabbit
Clonality:	Polyclonal
Conjugate:	This DNAJB12 antibody is un-conjugated
Application:	Western Blotting (WB)

Product Details

Immunogen:	Synthetic peptide located between aa287-336 of human DNAJB12 (Q9NXW2, NP_001002762). Percent identity by BLAST analysis: Human, Chimpanzee, Gorilla, Gibbon, Marmoset, Mouse, Rat, Hamster, Elephant, Dog, Horse, Guinea pig (100%), Monkey, Bovine, Rabbit, Pig, Opossum, Turkey, Chicken, Lizard, Xenopus (92%), Goat, Zebra finch, Zebrafish (85%). Type of Immunogen: Synthetic peptide
Isotype:	IgG
Specificity:	Human DNAJB12
Predicted Reactivity:	Percent identity by BLAST analysis: Mouse, Rat, Dog, Horse, Guinea pig (100%) Rabbit, Pig, Chicken, Xenopus (92%) Goat, Zebrafish (85%).
Purification:	Immunoaffinity purified

Target Details

Target:	DNAJB12
Alternative Name:	DNAJB12 (DNAJB12 Products)
Background:	Name/Gene ID: DNAJB12 Synonyms: DNAJB12, DJ10
Gene ID:	54788
NCBI Accession:	NP_001002762
UniProt:	Q9NXW2

Application Details

Application Notes:	Approved: WB (0.2 - 1 µg/mL) Usage: Western Blot: Suggested dilution at 1.0 µg/mL in 5 % skim milk / PBS buffer, and HRP conjugated anti-Rabbit IgG should be diluted in 1: 50,000 - 100,000 as second antibody. ELISA titer in peptide based assay: 1:1562500.
Comment:	Target Species of Antibody: Human
Restrictions:	For Research Use only

Handling

Format:	Lyophilized
Reconstitution:	Distilled water
Concentration:	Lot specific
Buffer:	Lyophilized from PBS with 2 % sucrose
Handling Advice:	Avoid repeat freeze-thaw cycles.
Storage:	4 °C, -20 °C
Storage Comment:	Long term: -20°C, the use of 50% glycerol is recommended if storing aliquots in -20°C for long term use (up to 1 year) Short term (less than 1 week): 4°C. Avoid freeze-thaw cycles.

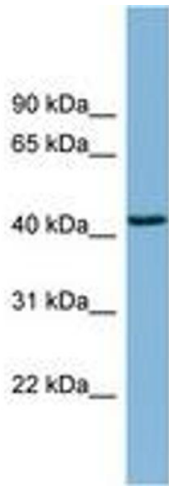


Image 1.