



[Go to Product page](#)

Datasheet for ABIN6742019  
**anti-FAM26F antibody (AA 143-192)**

1 Image

Overview

Quantity:	100 µL
Target:	FAM26F
Binding Specificity:	AA 143-192
Reactivity:	Human, Monkey
Host:	Rabbit
Clonality:	Polyclonal
Conjugate:	This FAM26F antibody is un-conjugated
Application:	Western Blotting (WB)

Product Details

Immunogen:	Synthetic peptide located between aa143-192 of human FAM26F (Q5R3K3, NP_001010919). Percent identity by BLAST analysis: Human, Gorilla, Gibbon, Monkey, Marmoset (100%), Galago, Bat, Rabbit (92%).  Type of Immunogen: Synthetic peptide
Isotype:	IgG
Specificity:	Human FAM26F
Predicted Reactivity:	Percent identity by BLAST analysis: Human (100%).
Purification:	Immunoaffinity purified

## Target Details

---

Target:	FAM26F
Alternative Name:	FAM26F ( <a href="#">FAM26F Products</a> )
Background:	Name/Gene ID: FAM26F  Synonyms: FAM26F, C6orf187, RP1-93H18.5, OTTHUMP00000017061, DJ93H18.5, OTTHUMP00000017062, Protein FAM26F
Gene ID:	441168
NCBI Accession:	<a href="#">NP_001010919</a>
UniProt:	<a href="#">Q5R3K3</a>

## Application Details

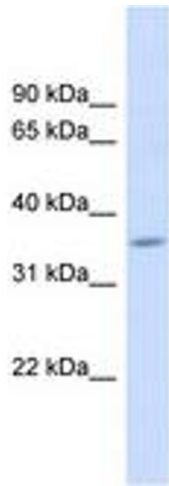
---

Application Notes:	Approved: WB (0.2 - 1 µg/mL)  Usage: Western Blot: Suggested dilution at 1.0 µg/mL in 5 % skim milk / PBS buffer, and HRP conjugated anti-Rabbit IgG should be diluted in 1: 50,000 - 100,000 as second antibody. ELISA titer in peptide based assay: 1:62500.
Comment:	Target Species of Antibody: Human
Restrictions:	For Research Use only

## Handling

---

Format:	Lyophilized
Reconstitution:	Distilled water
Concentration:	Lot specific
Buffer:	Lyophilized from PBS with 2 % sucrose
Handling Advice:	Avoid repeat freeze-thaw cycles.
Storage:	4 °C,-20 °C
Storage Comment:	Long term: -20°C, the use of 50% glycerol is recommended if storing aliquots in -20°C for long term use (up to 1 year)  Short term (less than 1 week): 4°C. Avoid freeze-thaw cycles.



**Image 1.**