



[Go to Product page](#)

Datasheet for ABIN6742021

anti-B3GALNT1 antibody (AA 251-300)

1 Image

Overview

Quantity:	100 µL
Target:	B3GALNT1
Binding Specificity:	AA 251-300
Reactivity:	Human, Monkey
Host:	Rabbit
Clonality:	Polyclonal
Conjugate:	This B3GALNT1 antibody is un-conjugated
Application:	Western Blotting (WB)

Product Details

Immunogen:	Synthetic peptide located between aa251-300 of human B3GALNT1 (O75752, NP_001033717). Percent identity by BLAST analysis: Human, Chimpanzee, Gorilla, Orangutan, Gibbon, Monkey, Marmoset, Platypus (100%), Galago, Mouse, Rat, Elephant, Panda, Dog, Bovine, Horse, Pig, Guinea pig (92%). Type of Immunogen: Synthetic peptide
Isotype:	IgG
Specificity:	Human B3GALNT1
Predicted Reactivity:	Percent identity by BLAST analysis: Human (100%) Dog, Bovine, Horse (92%).
Purification:	Immunoaffinity purified

Target Details

Target:	B3GALNT1
Alternative Name:	B3GALNT1 (B3GALNT1 Products)
Background:	Name/Gene ID: B3GALNT1 Synonyms: B3GALNT1, Beta3Gal-T3, Beta3GalT3, B3Gal-T3, Beta-1,3-GalTase 3, B3GALT3, Globoside synthase, GLCT3, GLOB, GalT3, Gb4Cer, P antigen synthase, p1, Beta-1,3-GalNAc-T1, Beta-3-Gx-T3, Brainiac1, P blood group globoside
Gene ID:	8706
NCBI Accession:	NP_001033717
UniProt:	O75752

Application Details

Application Notes:	Approved: WB (0.2 - 1 µg/mL) Usage: Western Blot: Suggested dilution at 1.0 µg/mL in 5 % skim milk / PBS buffer, and HRP conjugated anti-Rabbit IgG should be diluted in 1: 50,000 - 100,000 as second antibody. ELISA titer in peptide based assay: 1:62500.
Comment:	Target Species of Antibody: Human
Restrictions:	For Research Use only

Handling

Format:	Lyophilized
Reconstitution:	Distilled water
Concentration:	Lot specific
Buffer:	Lyophilized from PBS with 2 % sucrose
Handling Advice:	Avoid repeat freeze-thaw cycles.
Storage:	4 °C, -20 °C
Storage Comment:	Long term: -20°C, the use of 50% glycerol is recommended if storing aliquots in -20°C for long term use (up to 1 year) Short term (less than 1 week): 4°C. Avoid freeze-thaw cycles.

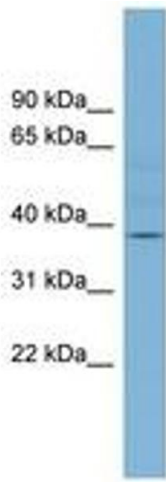


Image 1.