

Datasheet for ABIN6742028
anti-DHRS7B antibody (AA 215-264)[Go to Product page](#)

1 Image

Overview

Quantity:	100 µL
Target:	DHRS7B
Binding Specificity:	AA 215-264
Reactivity:	Human, Dog, Monkey
Host:	Rabbit
Clonality:	Polyclonal
Conjugate:	This DHRS7B antibody is un-conjugated
Application:	Western Blotting (WB)

Product Details

Immunogen:	Synthetic peptide located between aa215-264 of human DHRS7B (Q6IAN0, NP_056325). Percent identity by BLAST analysis: Human, Chimpanzee, Gorilla, Gibbon, Monkey (100%), Orangutan, Galago, Mouse, Rat, Elephant, Rabbit, Guinea pig (92%), Dog, Bovine, Bat (85%), Opossum (84%). Type of Immunogen: Synthetic peptide
Isotype:	IgG
Specificity:	Human DHRS7B
Predicted Reactivity:	Percent identity by BLAST analysis: Human (100%) Rat, Rabbit, Guinea pig (92%) Dog (85%).
Purification:	Immunoaffinity purified

Target Details

Target:	DHRS7B
Alternative Name:	DHRS7B (DHRS7B Products)
Background:	Name/Gene ID: DHRS7B Synonyms: DHRS7B, CGI-93, SDR32C1
Gene ID:	25979
NCBI Accession:	NP_056325
UniProt:	Q6IAN0

Application Details

Application Notes:	Approved: WB (0.2 - 1 µg/mL) Usage: Western Blot: Suggested dilution at 1.0 µg/mL in 5 % skim milk / PBS buffer, and HRP conjugated anti-Rabbit IgG should be diluted in 1: 50,000 - 100,000 as second antibody. ELISA titer in peptide based assay: 1:12500.
Comment:	Target Species of Antibody: Human
Restrictions:	For Research Use only

Handling

Format:	Lyophilized
Reconstitution:	Distilled water
Concentration:	Lot specific
Buffer:	Lyophilized from PBS with 2 % sucrose
Handling Advice:	Avoid repeat freeze-thaw cycles.
Storage:	4 °C, -20 °C
Storage Comment:	Long term: -20°C, the use of 50% glycerol is recommended if storing aliquots in -20°C for long term use (up to 1 year) Short term (less than 1 week): 4°C. Avoid freeze-thaw cycles.

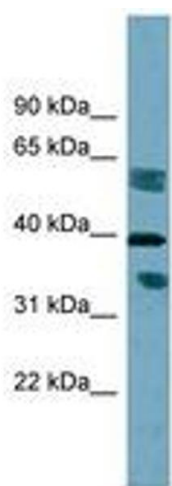


Image 1.