



Datasheet for ABIN6742032  
**anti-SUSD4 antibody (AA 251-300)**



[Go to Product page](#)

1 Image

Overview

Quantity:	100 µL
Target:	SUSD4
Binding Specificity:	AA 251-300
Reactivity:	Human, Mouse, Rat, Cow, Horse, Rabbit, Dog, Guinea Pig, Bat, Monkey
Host:	Rabbit
Clonality:	Polyclonal
Conjugate:	This SUSD4 antibody is un-conjugated
Application:	Western Blotting (WB)

Product Details

Immunogen:	Synthetic peptide located between aa251-300 of human SUSD4 (Q5VX71, NP_060452). Percent identity by BLAST analysis: Human, Chimpanzee, Gorilla, Orangutan, Gibbon, Monkey, Galago, Marmoset, Mouse, Rat, Elephant, Dog, Bovine, Bat, Rabbit, Horse, Opossum, Guinea pig (100%), Turkey, Chicken, Platypus, Lizard (85%), Zebrafish (84%).  Type of Immunogen: Synthetic peptide
Isotype:	IgG
Specificity:	Human SUSD4
Predicted Reactivity:	Percent identity by BLAST analysis: Human, Mouse, Rat, Dog, Bovine, Rabbit, Horse, Guinea pig (100%) Chicken (85%).
Purification:	Immunoaffinity purified

## Target Details

---

Target:	SUSD4
Alternative Name:	SUSD4 ( <a href="#">SUSD4 Products</a> )
Background:	Name/Gene ID: SUSD4  Synonyms: SUSD4, RP11-239E10.4, Sushi domain containing 4, PRO222, YHGM196
Gene ID:	55061
NCBI Accession:	<a href="#">NP_060452</a>
UniProt:	<a href="#">Q5VX71</a>

## Application Details

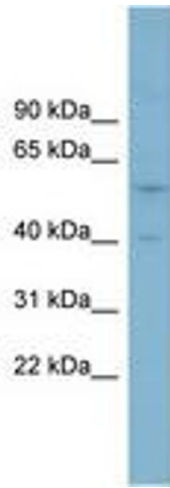
---

Application Notes:	Approved: WB (0.2 - 1 µg/mL)  Usage: Western Blot: Suggested dilution at 1.0 µg/mL in 5 % skim milk / PBS buffer, and HRP conjugated anti-Rabbit IgG should be diluted in 1: 50,000 - 100,000 as second antibody. ELISA titer in peptide based assay: 1:1562500.
Comment:	Target Species of Antibody: Human
Restrictions:	For Research Use only

## Handling

---

Format:	Lyophilized
Reconstitution:	Distilled water
Concentration:	Lot specific
Buffer:	Lyophilized from PBS with 2 % sucrose
Handling Advice:	Avoid repeat freeze-thaw cycles.
Storage:	4 °C, -20 °C
Storage Comment:	Long term: -20°C, the use of 50% glycerol is recommended if storing aliquots in -20°C for long term use (up to 1 year)  Short term (less than 1 week): 4°C. Avoid freeze-thaw cycles.



**Image 1.**