



[Go to Product page](#)

Datasheet for ABIN6742034  
**anti-DBX2 antibody (C-Term)**

1 Image

Overview

Quantity:	100 µL
Target:	DBX2
Binding Specificity:	C-Term
Reactivity:	Human, Cow, Guinea Pig, Horse
Host:	Rabbit
Clonality:	Polyclonal
Conjugate:	This DBX2 antibody is un-conjugated
Application:	Western Blotting (WB)

Product Details

Immunogen:	Synthetic peptide from C-Terminus of human DBX2 (Q6ZNG2, NP_001004329). Percent identity by BLAST analysis: Human, Chimpanzee, Gorilla, Gibbon, Galago, Marmoset, Elephant, Bovine, Horse (100%), Monkey, Dog (92%), Bat, Opossum (85%), Guinea pig (84%).  Type of Immunogen: Synthetic peptide
Isotype:	IgG
Specificity:	Human DBX2
Predicted Reactivity:	Percent identity by BLAST analysis: Human, Bovine (100%) Dog (92%) Guinea pig (84%).
Purification:	Immunoaffinity purified

## Target Details

---

Target:	DBX2
Alternative Name:	DBX2 ( <a href="#">DBX2 Products</a> )
Background:	Name/Gene ID: DBX2  Synonyms: DBX2, Homeobox protein DBX2, Developing brain homeobox 2
Gene ID:	440097
NCBI Accession:	<a href="#">NP_001004329</a>
UniProt:	<a href="#">Q6ZNG2</a>

## Application Details

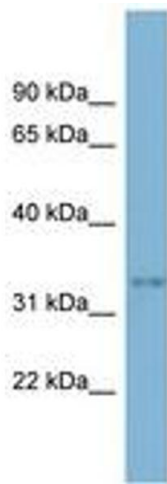
---

Application Notes:	Approved: WB (0.2 - 1 µg/mL)  Usage: Western Blot: Suggested dilution at 1.0 µg/mL in 5 % skim milk / PBS buffer, and HRP conjugated anti-Rabbit IgG should be diluted in 1: 50,000 - 100,000 as second antibody. ELISA titer in peptide based assay: 1:312500.
Comment:	Target Species of Antibody: Human
Restrictions:	For Research Use only

## Handling

---

Format:	Lyophilized
Reconstitution:	Distilled water
Concentration:	Lot specific
Buffer:	Lyophilized from PBS with 2 % sucrose
Handling Advice:	Avoid repeat freeze-thaw cycles.
Storage:	4 °C, -20 °C
Storage Comment:	Long term: -20°C, the use of 50% glycerol is recommended if storing aliquots in -20°C for long term use (up to 1 year)  Short term (less than 1 week): 4°C. Avoid freeze-thaw cycles.



**Image 1.**