



[Go to Product page](#)

Datasheet for ABIN6742037
anti-PERP antibody (AA 107-156)

1 Image

Overview

Quantity:	100 µL
Target:	PERP
Binding Specificity:	AA 107-156
Reactivity:	Human, Mouse, Dog, Rat, Cow, Pig
Host:	Rabbit
Clonality:	Polyclonal
Conjugate:	This PERP antibody is un-conjugated
Application:	Western Blotting (WB)

Product Details

Immunogen:	Synthetic peptide located between aa107-156 of human PERP (Q96FX8, NP_071404). Percent identity by BLAST analysis: Human (100%), Gorilla, Gibbon, Monkey, Horse (92%), Mouse, Rat, Panda, Dog, Bovine, Rabbit, Pig, Guinea pig (85%). Type of Immunogen: Synthetic peptide
Isotype:	IgG
Specificity:	Human PERP
Predicted Reactivity:	Percent identity by BLAST analysis: Human (100%) Horse (92%) Mouse, Rat, Dog, Bovine, Pig (85%).
Purification:	Immunoaffinity purified

Target Details

Target:	PERP
Alternative Name:	PERP (PERP Products)
Background:	Name/Gene ID: PERP Synonyms: PERP, DJ496H19.1, KCP-1, PERP, TP53 apoptosis effector, KCP1, p53-induced protein PIGPC1, THW, KRTCAP1, PIGPC1, RP3-496H19.1, Transmembrane protein THW
Gene ID:	64065
NCBI Accession:	NP_071404
UniProt:	Q96FX8
Pathways:	Cell-Cell Junction Organization , Positive Regulation of Endopeptidase Activity

Application Details

Application Notes:	Approved: WB (0.2 - 1 µg/mL) Usage: Western Blot: Suggested dilution at 1.0 µg/mL in 5 % skim milk / PBS buffer, and HRP conjugated anti-Rabbit IgG should be diluted in 1: 50,000 - 100,000 as second antibody. ELISA titer in peptide based assay: 1:62500.
Comment:	Target Species of Antibody: Human
Restrictions:	For Research Use only

Handling

Format:	Lyophilized
Reconstitution:	Distilled water
Concentration:	Lot specific
Buffer:	Lyophilized from PBS with 2 % sucrose
Handling Advice:	Avoid repeat freeze-thaw cycles.
Storage:	4 °C, -20 °C
Storage Comment:	Long term: -20°C, the use of 50% glycerol is recommended if storing aliquots in -20°C for long term use (up to 1 year) Short term (less than 1 week): 4°C. Avoid freeze-thaw cycles.

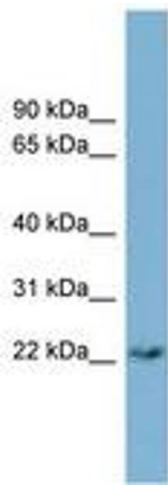


Image 1.