



Datasheet for ABIN6742040
anti-ANO3 antibody (AA 719-768)



[Go to Product page](#)

1 Image

Overview

Quantity:	100 µL
Target:	ANO3
Binding Specificity:	AA 719-768
Reactivity:	Human, Monkey
Host:	Rabbit
Clonality:	Polyclonal
Conjugate:	This ANO3 antibody is un-conjugated
Application:	Western Blotting (WB)

Product Details

Immunogen:	Synthetic peptide located between aa719-768 of human ANO3 (Q9BYT9, NP_113606). Percent identity by BLAST analysis: Human, Chimpanzee, Gorilla, Monkey, Marmoset (100%), Gibbon, Mouse, Rat, Panda, Dog, Bovine, Pig (92%), Galago, Elephant, Bat, Guinea pig (85%). Type of Immunogen: Synthetic peptide
Isotype:	IgG
Specificity:	Human ANO3 / Anoctamin-3
Predicted Reactivity:	Percent identity by BLAST analysis:
Purification:	Immunoaffinity purified

Target Details

Target:	ANO3
Alternative Name:	ANO3 / TMEM16C (ANO3 Products)
Background:	Name/Gene ID: ANO3 Synonyms: ANO3, Anoctamin 3, Anoctamin-3, C11orf25, Transmembrane protein 16C, GENX-3947, TMEM16C
Gene ID:	63982
NCBI Accession:	NP_113606
UniProt:	Q9BYT9

Application Details

Application Notes:	Approved: WB (0.2 - 1 µg/mL) Usage: Western Blot: Suggested dilution at 1.0 µg/mL in 5 % skim milk / PBS buffer, and HRP conjugated anti-Rabbit IgG should be diluted in 1: 50,000 - 100,000 as second antibody. ELISA titer in peptide based assay: 1:312500.
Comment:	Target Species of Antibody: Human
Restrictions:	For Research Use only

Handling

Format:	Lyophilized
Reconstitution:	Distilled water
Concentration:	Lot specific
Buffer:	Lyophilized from PBS with 2 % sucrose
Handling Advice:	Avoid repeat freeze-thaw cycles.
Storage:	4 °C,-20 °C
Storage Comment:	Long term: -20°C, the use of 50% glycerol is recommended if storing aliquots in -20°C for long term use (up to 1 year) Short term (less than 1 week): 4°C. Avoid freeze-thaw cycles.

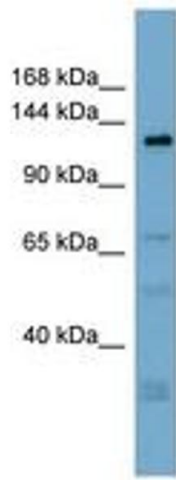


Image 1.