



[Go to Product page](#)

Datasheet for ABIN6742041

anti-NPRL2 antibody (AA 287-336)

1 Image

Overview

Quantity:	100 µL
Target:	NPRL2
Binding Specificity:	AA 287-336
Reactivity:	Human, Mouse, Rat, Cow, Rabbit, Guinea Pig, Monkey, Pig, Hamster
Host:	Rabbit
Clonality:	Polyclonal
Conjugate:	This NPRL2 antibody is un-conjugated
Application:	Western Blotting (WB)

Product Details

Immunogen:	Synthetic peptide located between aa287-336 of human NPRL2 (Q8WTW4, NP_006536). Percent identity by BLAST analysis: Human, Chimpanzee, Gorilla, Gibbon, Monkey, Galago, Marmoset, Mouse, Rat, Hamster, Bovine, Rabbit, Pig, Guinea pig (100%), Elephant, Panda, Dog, Horse (92%), Platypus (84%). Type of Immunogen: Synthetic peptide
Isotype:	IgG
Specificity:	Human NPRL2 / TUSC4
Predicted Reactivity:	Percent identity by BLAST analysis:
Purification:	Immunoaffinity purified

Target Details

Target:	NPRL2
Alternative Name:	NPR2L / TUSC4 (NPRL2 Products)
Background:	Name/Gene ID: NPRL2 Synonyms: NPRL2, G21 protein, Gene 21 protein, NPR2-like protein, NPR2L, TUSC4, Tumor suppressor candidate 4
Gene ID:	10641
NCBI Accession:	NP_006536
UniProt:	Q8WTW4

Application Details

Application Notes:	Approved: WB (0.2 - 1 µg/mL) Usage: Western Blot: Suggested dilution at 1.0 µg/mL in 5 % skim milk / PBS buffer, and HRP conjugated anti-Rabbit IgG should be diluted in 1: 50,000 - 100,000 as second antibody. ELISA titer in peptide based assay: 1:1562500.
Comment:	Target Species of Antibody: Human
Restrictions:	For Research Use only

Handling

Format:	Lyophilized
Reconstitution:	Distilled water
Concentration:	Lot specific
Buffer:	Lyophilized from PBS with 2 % sucrose
Handling Advice:	Avoid repeat freeze-thaw cycles.
Storage:	4 °C,-20 °C
Storage Comment:	Long term: -20°C, the use of 50% glycerol is recommended if storing aliquots in -20°C for long term use (up to 1 year) Short term (less than 1 week): 4°C. Avoid freeze-thaw cycles.

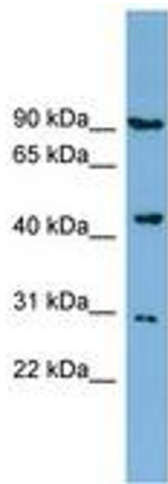


Image 1.