



[Go to Product page](#)

Datasheet for ABIN6742044

## anti-TMPRSS12 antibody (AA 215-264)

### 1 Image

#### Overview

Quantity:	100 µL
Target:	TMPRSS12
Binding Specificity:	AA 215-264
Reactivity:	Human, Guinea Pig, Rabbit, Monkey
Host:	Rabbit
Clonality:	Polyclonal
Conjugate:	This TMPRSS12 antibody is un-conjugated
Application:	Western Blotting (WB)

#### Product Details

Immunogen:	Synthetic peptide located between aa215-264 of human TMPRSS12 (Q86WS5, NP_872365). Percent identity by BLAST analysis: Human, Chimpanzee, Gorilla, Gibbon, Monkey, Marmoset (100%), Elephant (92%), Galago, Rat, Guinea pig (85%).  Type of Immunogen: Synthetic peptide
Isotype:	IgG
Specificity:	Human TMPRSS12
Predicted Reactivity:	Percent identity by BLAST analysis: Human (100%) Guinea pig (85%).
Purification:	Immunoaffinity purified

## Target Details

---

Target:	TMPRSS12
Alternative Name:	TMPRSS12 ( <a href="#">TMPRSS12 Products</a> )
Background:	Name/Gene ID: TMPRSS12  Synonyms: TMPRSS12
Gene ID:	283471
NCBI Accession:	<a href="#">NP_872365</a>
UniProt:	<a href="#">Q86WS5</a>

## Application Details

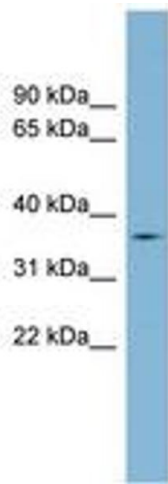
---

Application Notes:	Approved: WB (0.2 - 1 µg/mL)  Usage: Western Blot: Suggested dilution at 1.0 µg/mL in 5 % skim milk / PBS buffer, and HRP conjugated anti-Rabbit IgG should be diluted in 1: 50,000 - 100,000 as second antibody. ELISA titer in peptide based assay: 1:1562500.
Comment:	Target Species of Antibody: Human
Restrictions:	For Research Use only

## Handling

---

Format:	Lyophilized
Reconstitution:	Distilled water
Concentration:	Lot specific
Buffer:	Lyophilized from PBS with 2 % sucrose
Handling Advice:	Avoid repeat freeze-thaw cycles.
Storage:	4 °C, -20 °C
Storage Comment:	Long term: -20°C, the use of 50% glycerol is recommended if storing aliquots in -20°C for long term use (up to 1 year)  Short term (less than 1 week): 4°C. Avoid freeze-thaw cycles.



**Image 1.**