



Datasheet for ABIN6742046
anti-TPRKB antibody (AA 35-84)



[Go to Product page](#)

1 Image

Overview

Quantity:	100 µL
Target:	TPRKB
Binding Specificity:	AA 35-84
Reactivity:	Human, Rat, Mouse, Horse, Cow, Rabbit, Dog, Guinea Pig, Zebrafish (Danio rerio), Bat, Pig, Hamster
Host:	Rabbit
Clonality:	Polyclonal
Conjugate:	This TPRKB antibody is un-conjugated
Application:	Western Blotting (WB)

Product Details

Immunogen:	Synthetic peptide located between aa35-84 of human TPRKB (Q9Y3C4, NP_057142). Percent identity by BLAST analysis: Human, Chimpanzee, Gorilla, Gibbon, Monkey, Galago, Mouse, Rat, Hamster, Elephant, Panda, Dog, Bat, Rabbit, Horse, Pig, Guinea pig (100%), Marmoset, Opossum, Platypus (92%), Bovine, Chicken, Lizard (85%). Type of Immunogen: Synthetic peptide
Isotype:	IgG
Specificity:	Human TPRKB
Predicted Reactivity:	Percent identity by BLAST analysis: Human, Mouse, Rat, Dog, Pig, Guinea pig (100%) Bovine, Chicken (85%).

Product Details

Purification: Immunoaffinity purified

Target Details

Target: TPRKB

Alternative Name: TPRKB ([TPRKB Products](#))

Background: Name/Gene ID: TPRKB

Synonyms: TPRKB, CGI-121, TP53RK binding protein, PRPK-binding protein, TP53RK-binding protein

Gene ID: 51002

NCBI Accession: [NP_057142](#)

UniProt: [Q9Y3C4](#)

Application Details

Application Notes: Approved: WB (0.2 - 1 µg/mL)

Usage: Western Blot: Suggested dilution at 1.0 µg/mL in 5 % skim milk / PBS buffer, and HRP conjugated anti-Rabbit IgG should be diluted in 1: 50,000 - 100,000 as second antibody. ELISA titer in peptide based assay: 1:62500.

Comment: Target Species of Antibody: Human

Restrictions: For Research Use only

Handling

Format: Lyophilized

Reconstitution: Distilled water

Concentration: Lot specific

Buffer: Lyophilized from PBS with 2 % sucrose

Handling Advice: Avoid repeat freeze-thaw cycles.

Storage: 4 °C, -20 °C

Storage Comment: Long term: -20°C, the use of 50% glycerol is recommended if storing aliquots in -20°C for long

Handling

term use (up to 1 year)

Short term (less than 1 week): 4°C. Avoid freeze-thaw cycles.

Images

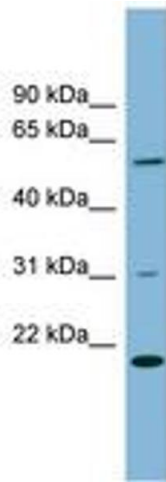


Image 1.