



[Go to Product page](#)

Datasheet for ABIN6742047

## anti-Golgin A7 antibody (AA 71-120)

### 1 Image

#### Overview

Quantity:	100 µL
Target:	Golgin A7 (GOLGA7)
Binding Specificity:	AA 71-120
Reactivity:	Mouse, Human, Rat, Cow, Dog, Horse, Rabbit, Guinea Pig, Pig, Bat, Monkey
Host:	Rabbit
Clonality:	Polyclonal
Conjugate:	This Golgin A7 antibody is un-conjugated
Application:	Western Blotting (WB)

#### Product Details

Immunogen:	Synthetic peptide located between aa71-120 of human GOLGA7 (Q7Z5G4, NP_057183). Percent identity by BLAST analysis: Human, Chimpanzee, Gorilla, Gibbon, Monkey, Galago, Marmoset, Mouse, Rat, Elephant, Dog, Bovine, Bat, Rabbit, Horse, Pig, Opossum, Guinea pig (100%), Turkey, Zebra finch, Chicken, Platypus, Xenopus, Zebrafish (92%), Salmon, Pike (83%), Sablefish (81%).  Type of Immunogen: Synthetic peptide
Isotype:	IgG
Specificity:	Human GOLGA7
Predicted Reactivity:	Percent identity by BLAST analysis: Dog, Rabbit, Xenopus (100%) Zebrafish (92%) Horse, Guinea pig (91%) Rat, Bovine (83%).

## Product Details

---

Purification: Immunoaffinity purified

## Target Details

---

Target: Golgin A7 (GOLGA7)

Alternative Name: GOLGA7 ([GOLGA7 Products](#))

Background: Name/Gene ID: GOLGA7

Synonyms: GOLGA7, GCP16, GOLGA7A, Golgin A7, GOLGA3AP1, HSPC041, Golgin subfamily A member 7

Gene ID: 51125

NCBI Accession: [NP\\_057183](#)

UniProt: [Q7Z5G4](#)

Pathways: [SARS-CoV-2 Protein Interactome](#)

## Application Details

---

Application Notes: Approved: WB (0.2 - 1 µg/mL)

Usage: Western Blot: Suggested dilution at 1.0 µg/mL in 5 % skim milk / PBS buffer, and HRP conjugated anti-Rabbit IgG should be diluted in 1: 50,000 - 100,000 as second antibody. ELISA titer in peptide based assay: 1:312500.

Comment: Target Species of Antibody: Human

Restrictions: For Research Use only

## Handling

---

Format: Lyophilized

Reconstitution: Distilled water

Concentration: Lot specific

Buffer: Lyophilized from PBS with 2 % sucrose

Handling Advice: Avoid repeat freeze-thaw cycles.

Storage: 4 °C, -20 °C

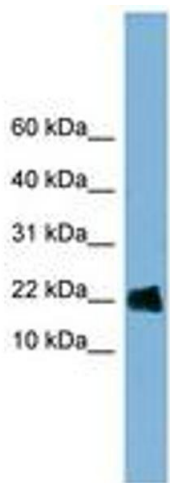
## Handling

---

Storage Comment: Long term: -20°C, the use of 50% glycerol is recommended if storing aliquots in -20°C for long term use (up to 1 year)  
Short term (less than 1 week): 4°C. Avoid freeze-thaw cycles.

## Images

---



**Image 1.**