



[Go to Product page](#)

Datasheet for ABIN6742064
anti-GPD2 antibody (C-Term)

1 Image

Overview

Quantity:	100 µL
Target:	GPD2
Binding Specificity:	C-Term
Reactivity:	Human, Rat, Horse, Rabbit, Dog, Guinea Pig, Cow, Hamster, Monkey, Bat, Pig
Host:	Rabbit
Clonality:	Polyclonal
Conjugate:	This GPD2 antibody is un-conjugated
Application:	Western Blotting (WB)

Product Details

Immunogen:	Synthetic peptide from C-Terminus of human GPD2 (P43304, NP_000399). Percent identity by BLAST analysis: Human, Chimpanzee, Gorilla, Gibbon, Monkey, Galago, Marmoset, Hamster, Elephant, Panda, Dog, Bovine, Bat, Rabbit, Horse, Pig, Guinea pig (100%), Mouse, Turkey, Chicken, Platypus (92%), Opossum, Xenopus (85%), Rat (78%). Type of Immunogen: Synthetic peptide
Isotype:	IgG
Specificity:	Human GPD2
Predicted Reactivity:	Percent identity by BLAST analysis: Human, Dog, Horse (100%) Mouse, Chicken (92%) Xenopus (85%).
Purification:	Immunoaffinity purified

Target Details

Target: GPD2

Alternative Name: GPD2 ([GPD2 Products](#))

Background: Name/Gene ID: GPD2

Synonyms: GPD2, GDH2, GPDH-M, GPD-M, GPDM, MGPDH, MtGPD

Gene ID: 2820

NCBI Accession: [NP_000399](#)

Application Details

Application Notes: Approved: WB (0.2 - 1 µg/mL)

Usage: Western Blot: Suggested dilution at 1.0 µg/mL in 5 % skim milk / PBS buffer, and HRP conjugated anti-Rabbit IgG should be diluted in 1: 50,000 - 100,000 as second antibody. ELISA titer in peptide based assay: 1:312500.

Comment: Target Species of Antibody: Human

Restrictions: For Research Use only

Handling

Format: Lyophilized

Reconstitution: Distilled water

Concentration: Lot specific

Buffer: Lyophilized from PBS with 2 % sucrose

Handling Advice: Avoid repeat freeze-thaw cycles.

Storage: 4 °C, -20 °C

Storage Comment: Long term: -20°C, the use of 50% glycerol is recommended if storing aliquots in -20°C for long term use (up to 1 year)

Short term (less than 1 week): 4°C. Avoid freeze-thaw cycles.

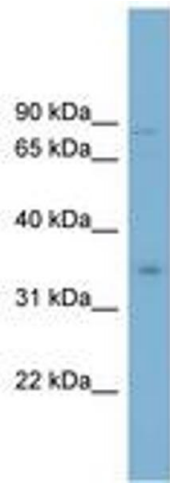


Image 1.