



[Go to Product page](#)

Datasheet for ABIN6742085  
**anti-HOXC8 antibody (AA 107-156)**

1 Image

Overview

Quantity:	100 µL
Target:	HOXC8
Binding Specificity:	AA 107-156
Reactivity:	Human, Mouse, Rat, Sheep, Dog, Rabbit, Cow, Monkey, Guinea Pig, Bat
Host:	Rabbit
Clonality:	Polyclonal
Conjugate:	This HOXC8 antibody is un-conjugated
Application:	Western Blotting (WB)

Product Details

Immunogen:	Synthetic peptide located between aa107-156 of human HOXC8 (P31273, NP_073149). Percent identity by BLAST analysis: Human, Chimpanzee, Gibbon, Monkey, Galago, Marmoset, Mouse, Rat, Sheep, Elephant, Dog, Bovine, Bat, Rabbit, Guinea pig (100%), Gorilla (92%), Chicken, Lizard, Xenopus (85%).  Type of Immunogen: Synthetic peptide
Isotype:	IgG
Specificity:	Human HOXC8
Predicted Reactivity:	Percent identity by BLAST analysis: Mouse, Rat, Sheep, Dog, Bovine, Rabbit, Guinea pig (100%) Xenopus (85%).
Purification:	Immunoaffinity purified

## Target Details

---

Target:	HOXC8
Alternative Name:	HOXC8 ( <a href="#">HOXC8 Products</a> )
Background:	Name/Gene ID: HOXC8  Synonyms: HOXC8, Homeo box C8, Homeobox protein Hox-C8, Hox-3.1, mouse, homolog of, HOX3A, Homeo box 3A, Homeobox C8, Homeobox protein Hox-3A, HOX3
Gene ID:	3224
NCBI Accession:	<a href="#">NP_073149</a>
UniProt:	<a href="#">P31273</a>

## Application Details

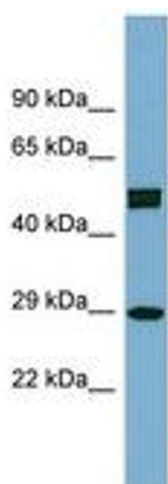
---

Application Notes:	Approved: WB (0.2 - 1 µg/mL)  Usage: Western Blot: Suggested dilution at 1.0 µg/mL in 5 % skim milk / PBS buffer, and HRP conjugated anti-Rabbit IgG should be diluted in 1: 50,000 - 100,000 as second antibody. ELISA titer in peptide based assay: 1:312500.
Comment:	Target Species of Antibody: Human
Restrictions:	For Research Use only

## Handling

---

Format:	Lyophilized
Reconstitution:	Distilled water
Concentration:	Lot specific
Buffer:	Lyophilized from PBS with 2 % sucrose
Handling Advice:	Avoid repeat freeze-thaw cycles.
Storage:	4 °C,-20 °C
Storage Comment:	Long term: -20°C, the use of 50% glycerol is recommended if storing aliquots in -20°C for long term use (up to 1 year)  Short term (less than 1 week): 4°C. Avoid freeze-thaw cycles.



**Image 1.**