



[Go to Product page](#)

Datasheet for ABIN6742089

anti-C1orf92 antibody (AA 359-408)

1 Image

Overview

Quantity:	100 µL
Target:	C1orf92 (LRRC71)
Binding Specificity:	AA 359-408
Reactivity:	Human, Mouse, Dog, Rabbit, Monkey
Host:	Rabbit
Clonality:	Polyclonal
Conjugate:	This C1orf92 antibody is un-conjugated
Application:	Western Blotting (WB)

Product Details

Immunogen:	Synthetic peptide located between aa359-408 of human LRRC71 (Q8N4P6, NP_653303). Percent identity by BLAST analysis: Human, Gorilla, Gibbon, Monkey, Mouse, Panda, Dog, Rabbit (100%), Galago, Rat, Elephant, Pig (92%), Marmoset, Bovine, Opossum (85%). Type of Immunogen: Synthetic peptide
Isotype:	IgG
Specificity:	Human LRRC71 / C1orf92
Predicted Reactivity:	Percent identity by BLAST analysis:
Purification:	Immunoaffinity purified

Target Details

Target: C1orf92 (LRRRC71)

Alternative Name: LRRRC71 ([LRRRC71 Products](#))

Background: Name/Gene ID: LRRRC71

Synonyms: LRRRC71, C1orf92, RP11-356J7.1

Gene ID: 149499

NCBI Accession: [NP_653303](#)

UniProt: [Q8N4P6](#)

Application Details

Application Notes: Approved: WB (0.2 - 1 µg/mL)

Usage: Western Blot: Suggested dilution at 1.0 µg/mL in 5 % skim milk / PBS buffer, and HRP conjugated anti-Rabbit IgG should be diluted in 1: 50,000 - 100,000 as second antibody. ELISA titer in peptide based assay: 1:312500.

Comment: Target Species of Antibody: Human

Restrictions: For Research Use only

Handling

Format: Lyophilized

Reconstitution: Distilled water

Concentration: Lot specific

Buffer: Lyophilized from PBS with 2 % sucrose

Handling Advice: Avoid repeat freeze-thaw cycles.

Storage: 4 °C, -20 °C

Storage Comment: Long term: -20°C, the use of 50% glycerol is recommended if storing aliquots in -20°C for long term use (up to 1 year)

Short term (less than 1 week): 4°C. Avoid freeze-thaw cycles.

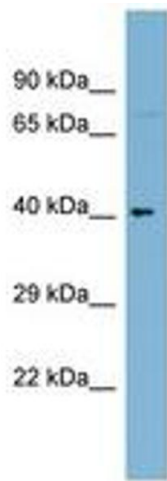


Image 1.